



ISEBE LEMFUNDO LEMPUMA KOLONI
EASTERN CAPE EDUCATION DEPARTMENT
OOS-KAAP ONDERWYSDEPARTEMENT

NATIONAL SENIOR CERTIFICATE
NASIONALE SENIOR SERTIFIKAAT

GRADE 11
GRAAD 11

ENGINEERING GRAPHICS AND DESIGN P1
INGENIEURSGRAFIKA EN -ONTWERP V1

NOVEMBER 2020
MEMORANDUM

MARKS / PUNTE: 200

TIME / TYD: 3 hours / uur

This memorandum consists of 7 pages.
Hierdie memorandum bestaan uit 7 bladsye.

Copyright reserved / Kopiereg voorbehou

PAPER 1
QUESTION 1: ANALYTICAL MARKING GUIDELINE

ANSWERS		
1	BOTHA ARCHITECTS	1
2	DP 2020 - 04	1
3	TYRON	1
4	LINDO	1
5	2020-04-01	1
6	MRS. X. RUPPING	1
7	BIDET	1
8	ARCH / OPENING IN THE WALL	2
9	NOT TO SCALE	1
10	NO. THE WINDOW MUST HAVE TWO LINES INSTEAD OF ONE	2
11	MECHANICAL HATCHING OR WRONG HATCHING TYPE USED	2
12	BUILD IN CUPBOARD	2
13	WEST VIEW / WEST ELEVATION	2
14	900 mm	2
15	ANSWER BELOW	4
16	ANSWER BELOW	4
TOTAL		28

VRAESTEL 1
VRAAG 1: ANALITIES NASIENRIGLYN

ANTWOORDE		
1	BOTHA ARGITEKTE	1
2	DP 2020 - 04	1
3	TYRON	1
4	LINDO	1
5	2020-04-01	1
6	MEV. X. RUPPING	1
7	BIDET	1
8	BOOG (OPENING) IN DIE MUUR	2
9	NIE VOLGENS SKAAL	1
10	NEE. DIE VENSTERS MOET TWEE LYNE HÊ IPV EEN	2
11	MEGANIESE OF VERKEERDE TIPE ARSERING IS GEBRUIK	2
12	INGEBOUDE KAS	2
13	WESAANSIG / WES ELEVASIE	2
14	900 mm	2
15	ANTWOORD ONDER	4
16	ANTWOORD ONDER	4
TOTAL		28

QUESTION / VRAAG 15

Toon alle berekeninge / Show all calculations

calculation: + / x	2 (L + B) ✓	+ / x berekening
correct values	2 (10 + 5,5)	korrekte waardes
correct answer	2 x 15,5 ✓	korrekte antwoord
correct unit	= 31 m ✓✓	korrekte eenheid

[4]

QUESTION / VRAAG 16

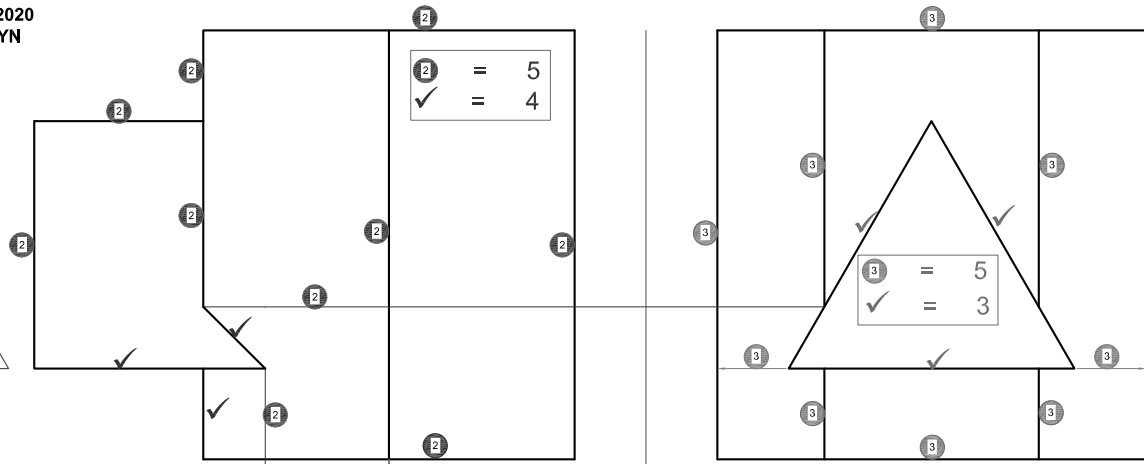
Toon alle berekeninge / Show all calculations

calculation (+)	7.03	berekening (+)
correct values	2.48 ✓	korrekte waardes
correct answer	+ 5.95	korrekte antwoord
correct unit (m)	15.46 m ² ✓✓	korrekte eenheid (m)

[4]

PAPER 1 - QUESTION 2: INTERPENETRATION AND DEVELOPMENT
Gr. 11
NOVEMBER 2020
MARKING GUIDELINE

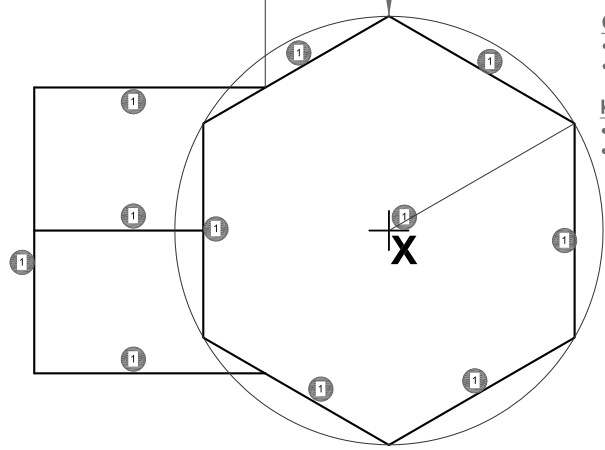
VRAESTEL 1 - VRAAG 2: INTERPENETRASIE EN ONTWIKKELING
Gr. 11
NOVEMBER 2020
NASIENRIGLYN



2 = 5
✓ = 4

3 = 5
✓ = 3

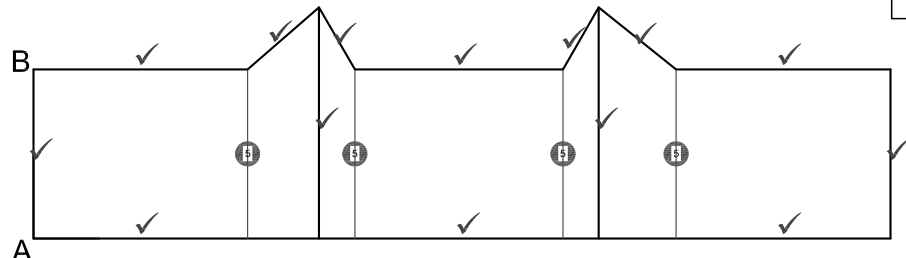
20mm



- Construction**
- correct placing
 - hexagon construction
- Konstruksie**
- korrekte plasing
 - seskant konstruksie

ASSESSERINGSKRITERIA		
1	BOAANSIG + KONSTRUKSIE	6
2	VOORAANSIG	9
3	LINKERAANSIG	8
4	ONTWIKKELING	16
TOTAAL		39

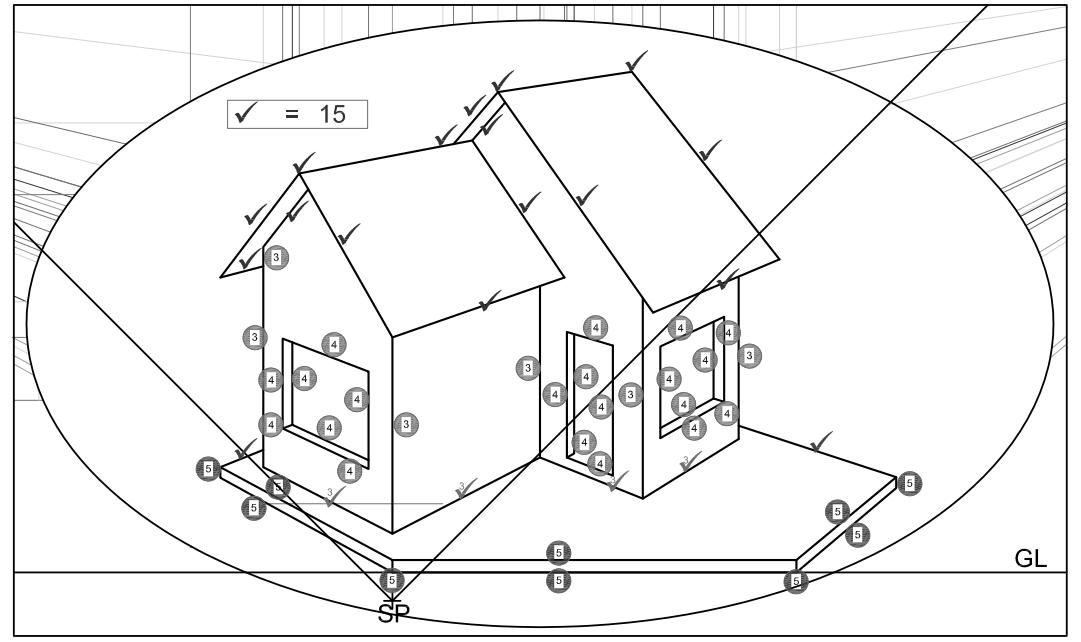
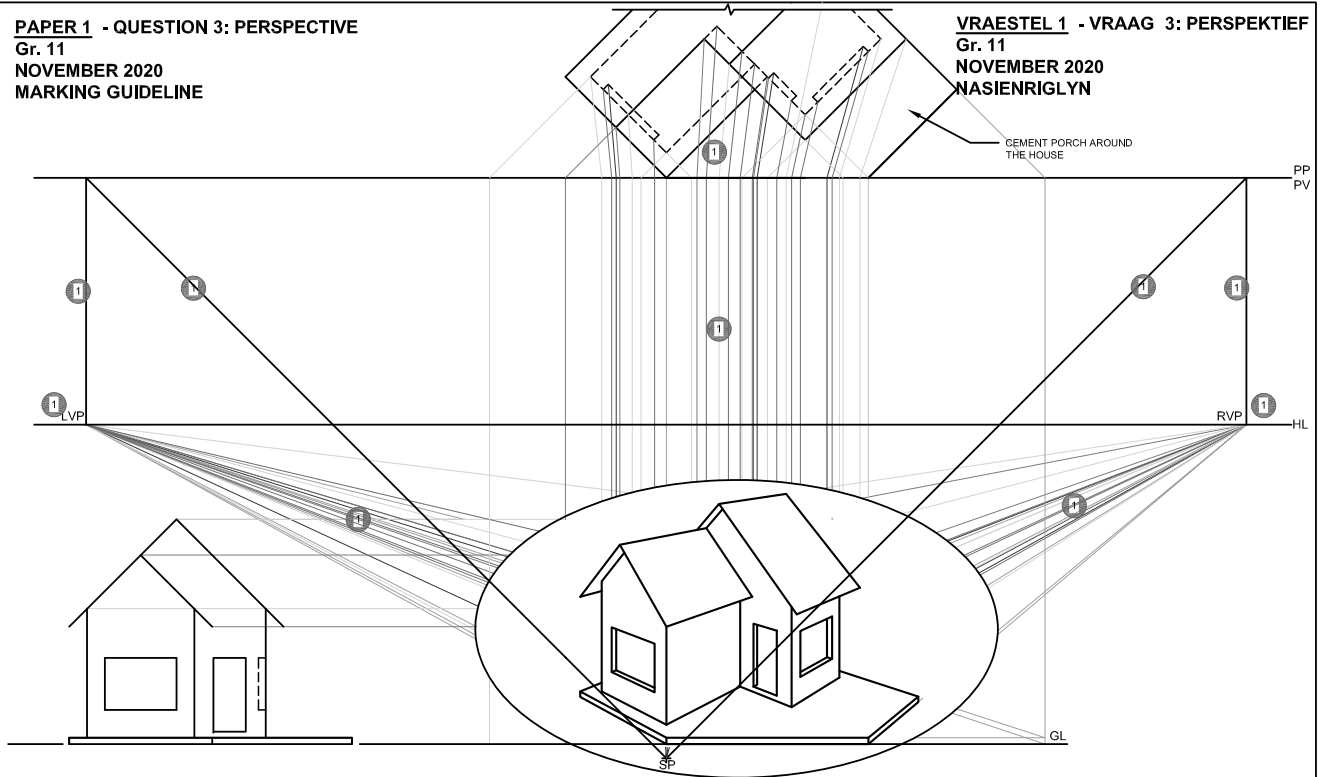
ASSESSMENT CRITERIA		
1	TOP VIEW + CONSTRUCTION	6
2	FRONT VIEW	9
3	LEFT VIEW	8
4	DEVELOPMENT	16
TOTAL		39



3 = 2
✓ = 14

PAPER 1 - QUESTION 3: PERSPECTIVE
Gr. 11
NOVEMBER 2020
MARKING GUIDELINE

VRAESTEL 1 - VRAAG 3: PERSPEKTIEF
Gr. 11
NOVEMBER 2020
NASIENRIGLYN



ASSESSMENT CRITERIA		
1	CONSTRUCTION + VP's	5
2	ROOF	15
3	WALLS	7
4	DOOR + WINDOWS	10
5	PORCH	7
TOTAL		44

ASSESSERINGSKRITERIA		
1	KONSTRUKSIE & VPte	5
2	DAK	15
3	MURE	7
4	DEUR + VENSTERS	10
5	STOEP	7
TOTAAL		44

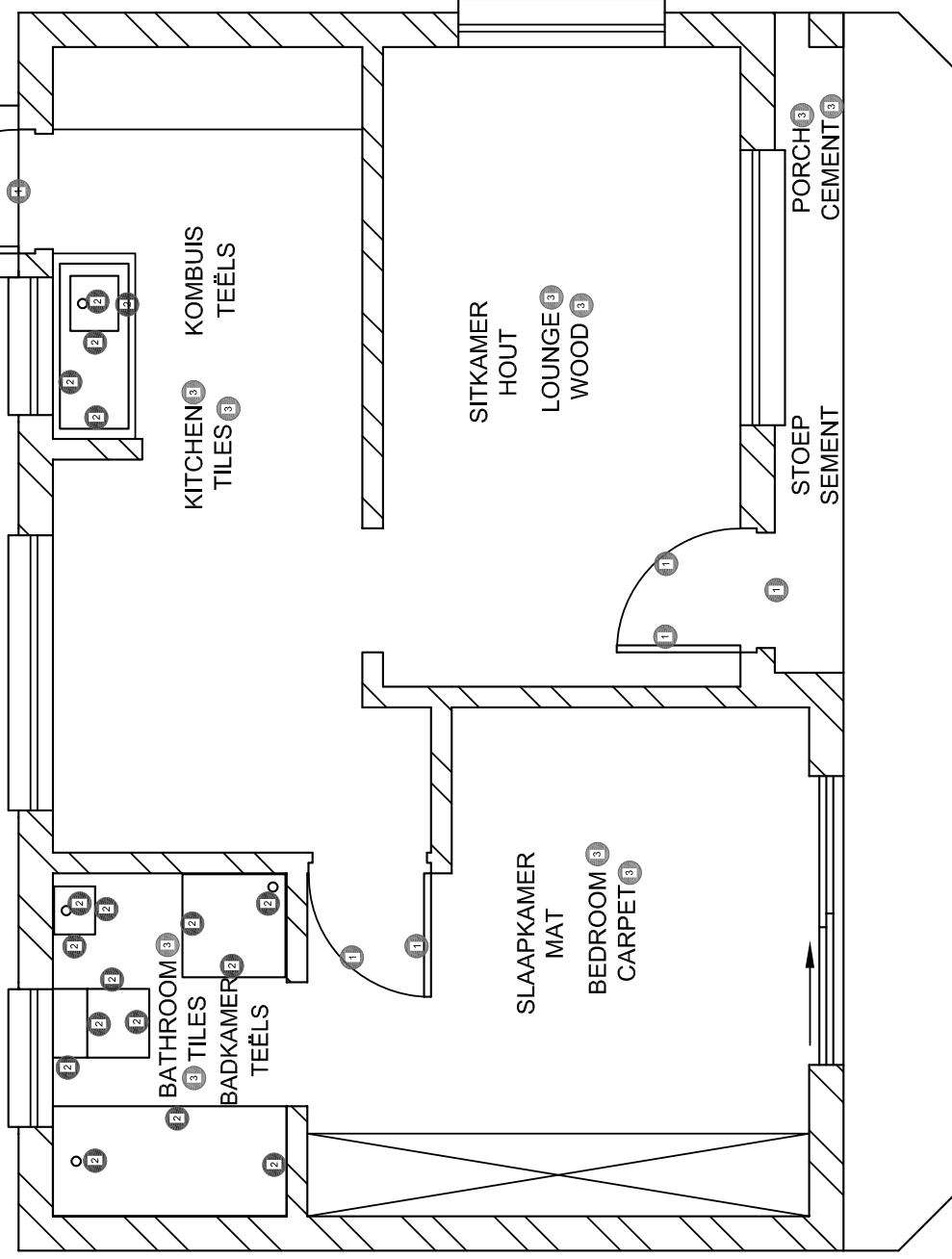
PAPER 1 - QUESTION 4: FLOOR PLAN
Gr. 11
NOVEMBER 2020
MARKING GUIDELINE

Arsering: Alles gearseer ✓4 ✓4 ✓4 ✓4
Volgens SANS riglyne ✓4 ✓4 ✓4 ✓4
Siviele arsering is gebruik ✓4 ✓4 ✓4 ✓4
Moet instrumente gebruik ✓4 ✓4 ✓4 ✓4

Hatching: All hatched ✓4 ✓4 ✓4 ✓4
SANS compliant ✓4 ✓4 ✓4 ✓4
Civil hatching used ✓4 ✓4 ✓4 ✓4
Instruments must be used ✓4 ✓4 ✓4 ✓4

VRAESTEL 1 - VRAAG 4: VLOERPLAN

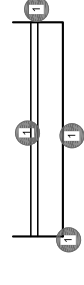
Gr. 11
NOVEMBER 2020
NASIENRIGLYN



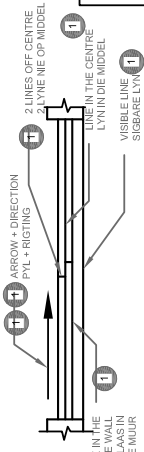
VLOERPLAN
SKAAL 1 : 50

FLOOR PLAN
SCALE 1 : 50

5 X VENSTERS / WINDOWS



1 X SKUIFDEUR / SLIDING DOOR



Copyright reserved

Please turn over

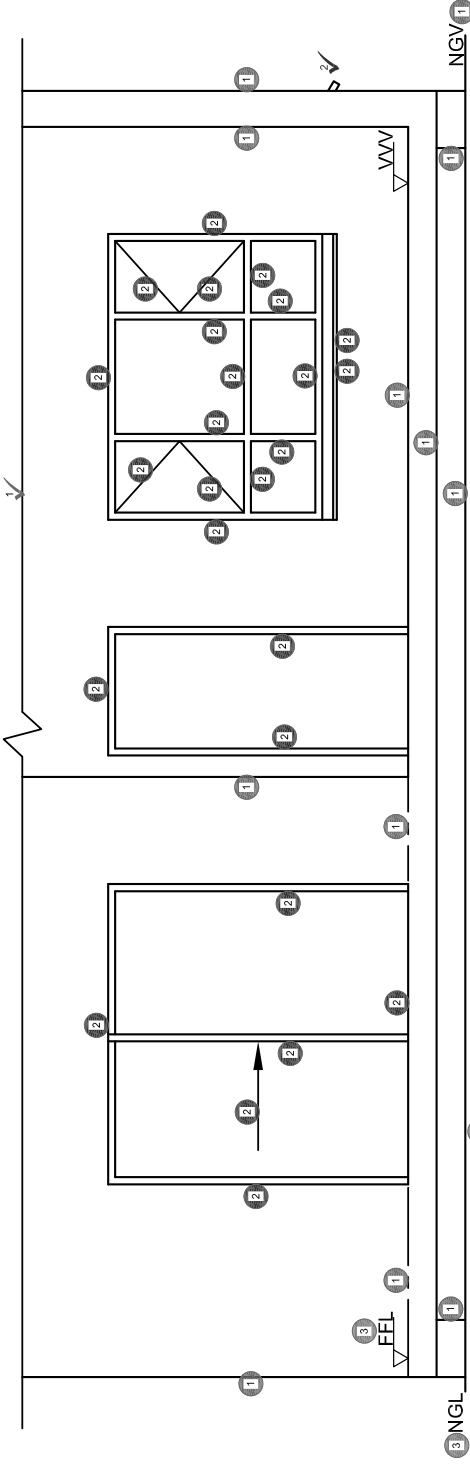
ASSESSMENT CRITERIA	
FLOOR PLAN	
1	DOORS + WINDOWS
2	FIXTURES
3	LABELS
4	HATCHING
SUB TOTAL	
	36

ASSESSERINGSKRITERIA	
VLOERPLAN	
1	DEURE & VENSTERS
2	TOEBEHORE
3	BYSKRIFTE
4	ARSERING
SUBTOTAAL	
	36

5

PAPER 1 - QUESTION 4: ELEVATION
Gr. 11
NOVEMBER 2020
MARKING GUIDELINE

VRAESTEL 1 - VRAAG 4: ELEVASIE
Gr. 11
NOVEMBER 2020
NASIENRIGLYN



SOUTH ELEVATION
SCALE 1 : 50

SUID ELEVASIE
SKAAL 1 : 50

ASSESSMENT CRITERIA	
SOUTH ELEVATION	
1	WALLS + STEPS + FFL + BREAK LINE
2	DOOR + WINDOWS
3	LABELS
SUB TOTAL	
	23

ASSESSERINGSKRITERIA	
SUID ELEVASIE	
1	MURE + TRAPPE + VVW + BREEKLYN
2	DEURE + VENSTERS
3	BYSKRIFTE
SUBTOTAAL	
	23

6

Copyright reserved

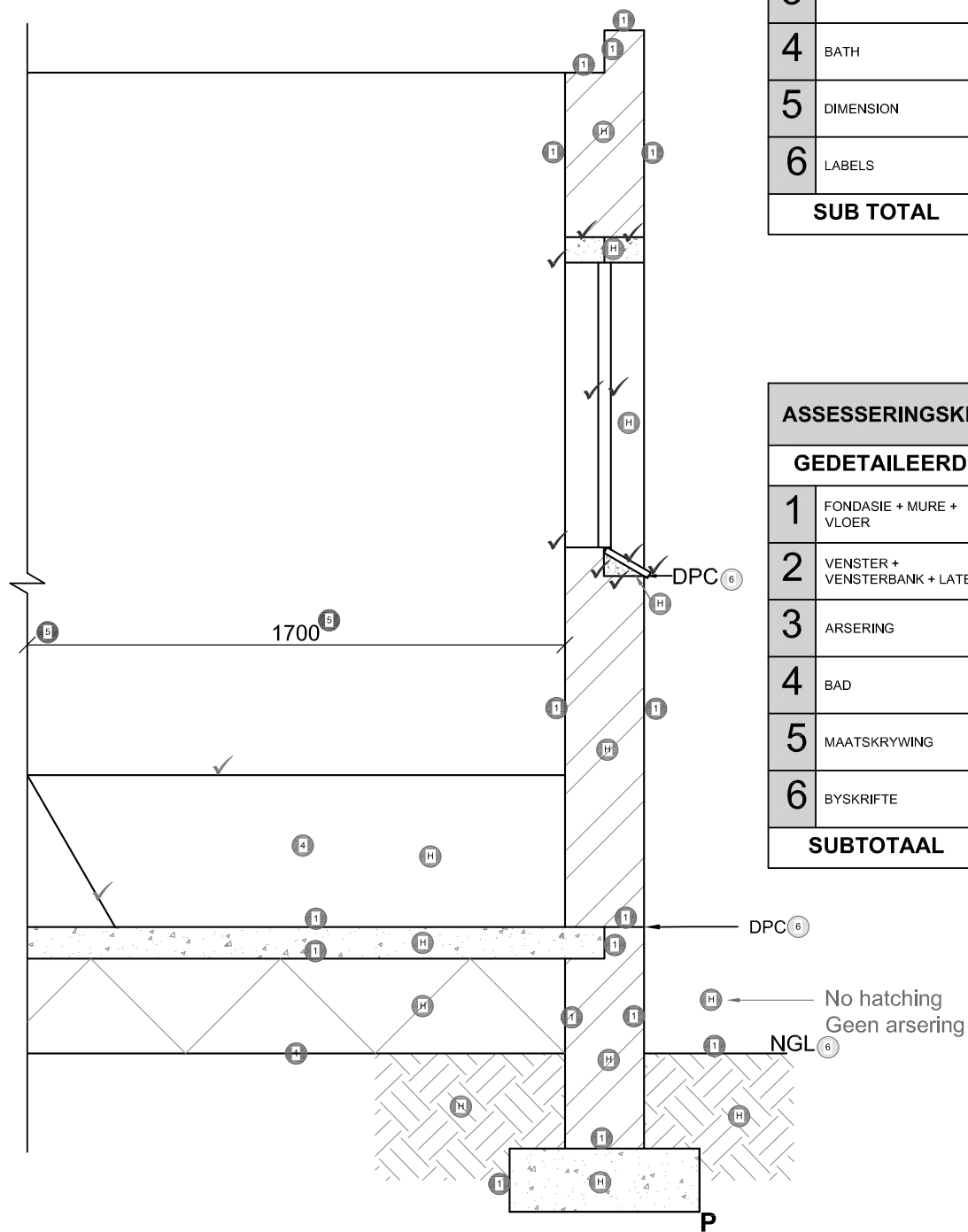
Please turn over

PAPER 1 - QUESTION 4: DETAILED SECTION
Gr. 11
NOVEMBER 2020
MARKING GUIDELINE

VRAESTEL 1 - VRAAG 4: GEDETAILEERDE SNIT
Gr. 11
NOVEMBER 2020
NASIENRIGLYN

ASSESSMENT CRITERIA		
DETAILED SECTION		
1	FOUNDATIONS + WALLS + SLAB	8 ½
2	WINDOW + SILL + LINTEL	10
3	HATCHING	6 ½
4	BATH	2 ½
5	DIMENSION	1
6	LABELS	1 ½
SUB TOTAL		30

ASSESSERINGSKRITERIA		
GEDETAILEERDE SNIT		
1	FONDASIE + MURE + VLOER	8 ½
2	VENSTER + VENSTERBANK + LATEI	10
3	ARSERING	6 ½
4	BAD	2 ½
5	MAATSKRYWING	1
6	BYSKRIFTE	1 ½
SUBTOTAAL		30



GEDETAILEERDE SNIT A : A
SKAAL 1 : 20

DETAILED SECTION ON A : A
SCALE 1 : 20