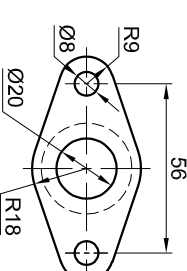
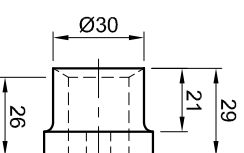
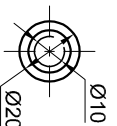
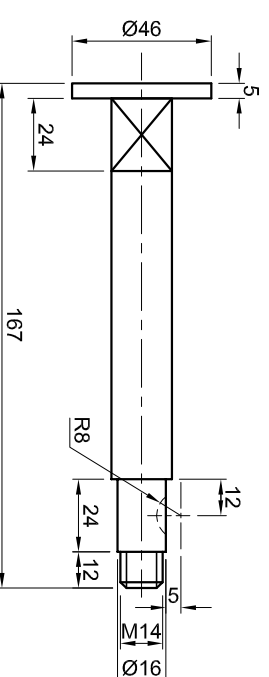
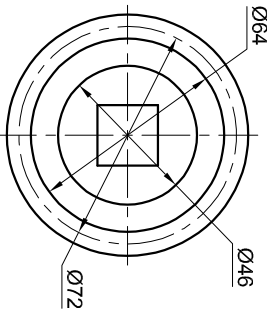
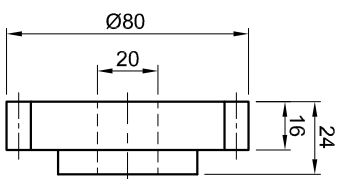


HULS (1)

KATROL (2)

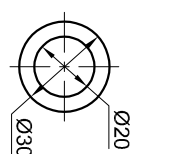
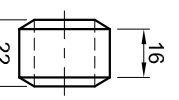
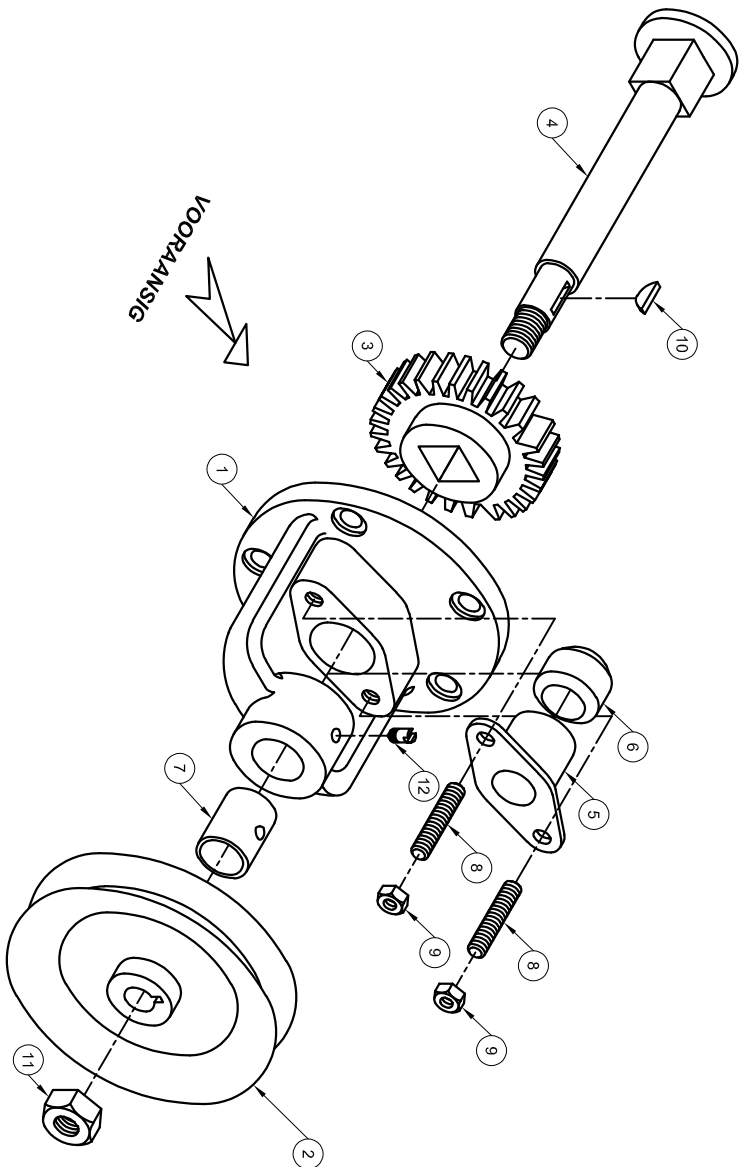


RAT (3)

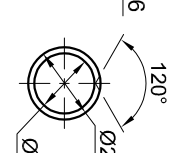
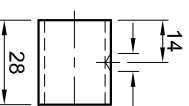
AS (4)

STUUT (5)

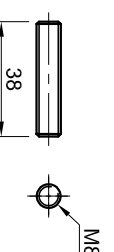
- LET WEL:**
- Beplanning van die uitleg van die aansigte is noodsaaklik.
 - Alle tekeninge moet aan die riglyne, vervat in die SANS 10111, voldoen.
 - Toon, in die deursnee vooraansig, DRIE vlakke van die M14-moer.
 - Toon ALLE moer konstruksies.
 - GEEN verborge besonderhede word verlang nie.
- Voeg die volgende kenmerk by die tekening:**
- Die snyvlak A-A.



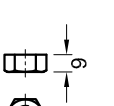
PAKSTUK (6)



BUS (7)



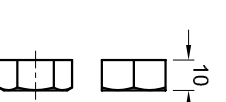
STAAF (8)



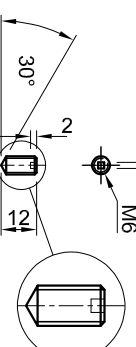
M8-MOER (9)



SPY (10)



M14-MOER (11)



GRYPSTROEF (12)

LYS VAN ONDERDELE

[92]

ONDERDELE	MATERIAAL	HOEVEELHEID
1. HULS	GIETYSSTER	1
2. KATROL	ALUMINIUM	1
3. RAT	STAAL	1
4. AS	STAAL	1
5. STUUT	GIETYSSTER	1
6. PAKSTUK	MCS	1
7. BUS	BRONS	1
8. STAAF	STD	2
9. M8-MOER	STD	2
10. SPY	STAAL	2
11. M14-MOER	STD	2
12. GRYPSTROEF	STD	1

TITTEL:

V-BELT DRYWER

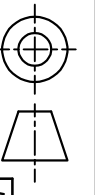
AMATHOLE

INGENIEURS VERVAARDIGERS

ALLE AFMETINGS IS IN MILLIMETER.

ALLE ONGESPESIFISEERDE RADIUSSE IS R3.

21 BUFFALO STRAAT
OOS LONDEN
5201
043 7640 488



5