



# basic education

Department:  
Basic Education  
**REPUBLIC OF SOUTH AFRICA**

**NATIONAL  
SENIOR CERTIFICATE**

**GRADE 12**

**ENGLISH HOME LANGUAGE P3**

**NOVEMBER 2018**

**MARKS: 100**

**TIME: 2½ hours**

**This question paper consists of 6 pages.**

**INSTRUCTIONS AND INFORMATION**

1. This question paper consists of TWO sections:  
  
SECTION A: Essay (50)  
SECTION B: Transactional Texts (2 x 25) (50)
2. Answer ONE question from SECTION A and TWO questions from SECTION B.
3. Write in the language in which you are being assessed.
4. Start EACH section on a NEW page.
5. You must plan (e.g. using a mind map/a diagram/a flow chart/key words), edit and proofread your work. The plan must appear BEFORE the answer.
6. All planning must be clearly indicated as such. It is advisable to draw a line through all planning.
7. You are strongly advised to spend your time as follows:  
  
SECTION A: approximately 80 minutes  
SECTION B: approximately 70 (2 x 35) minutes
8. Number the answers correctly according to the numbering system used in this question paper.
9. The title/heading must NOT be included when doing a word count.
10. Write neatly and legibly.

**SECTION A: ESSAY****QUESTION 1**

Write an essay of 400–450 words (2–2½ pages) on ONE of the following topics. Write down the NUMBER and TITLE/HEADING of your essay.

- 1.1 Marketplace secrets [50]
- 1.2 'What is life?  
It is the flash of a firefly in the night;  
It is the breath of a buffalo in the wintertime.  
It is the little shadow which runs across the grass  
And loses itself in the sunset.'  
(Crowfoot, warrior and orator) [50]
- 1.3 Mankind is on the edge. [50]
- 1.4 'It is only impossible until it is done.'  
(Nelson Mandela) [50]
- 1.5 Necessary trouble [50]
- 1.6 The pictures reproduced below and on page 4 may evoke a reaction or feeling in you or stir your imagination.

Select ONE picture and write an essay in response. Write the question number (1.6.1, 1.6.2 or 1.6.3) of your choice and give your essay a title.

**NOTE:** There must be a clear link between your essay and the picture you have chosen.

1.6.1



[Source: [www.travelhonestly.com](http://www.travelhonestly.com)]

[50]

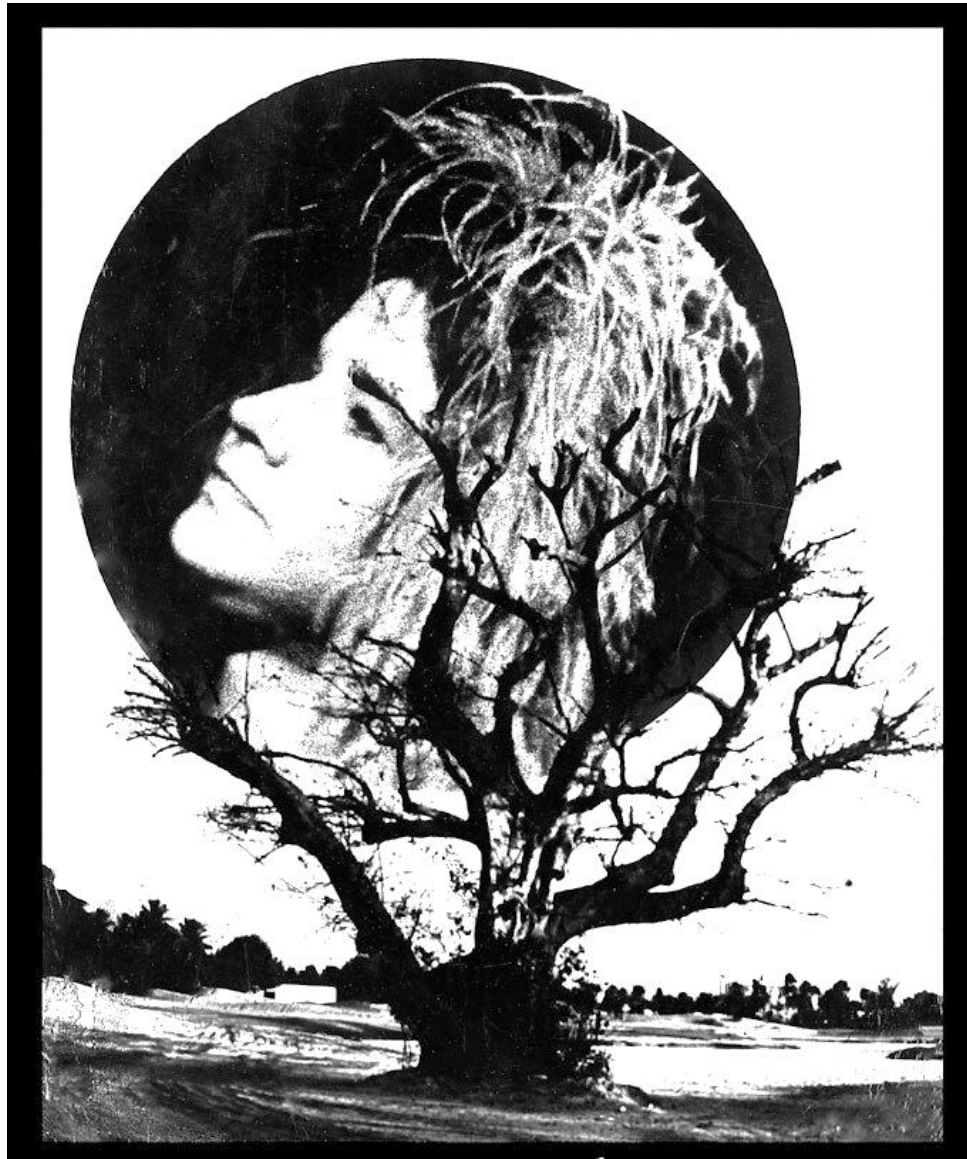
1.6.2



[Source: [www.weheartit.com](http://www.weheartit.com)]

[50]

1.6.3



[Source: [www.statusfacebook.com](http://www.statusfacebook.com)]

[50]

**TOTAL SECTION A: 50**

**SECTION B: TRANSACTIONAL TEXTS****QUESTION 2**

- Respond to TWO of the following topics.
- The body of each of your answers should be 180–200 words (20–25 lines) in length.
- Pay careful attention to the following:
  - Audience, register, tone and style
  - Choice of words and language structure
  - Format
- Write down the NUMBER and TITLE/HEADING of the text you have chosen, e.g. 2.1 SPEECH.

**2.1 SPEECH**

You are representing a group that is interested in expanding the number of languages offered at your school.

Write the speech that you will deliver to the school's governing body, titled 'Language should build bridges – not create borders'.

**[25]****2.2 FORMAL LETTER**

You are the chairperson of an organisation that promotes the interests of young innovators.

Write a letter of congratulations to the winner of the 'Young Innovator Award 2018'.

**[25]****2.3 OBITUARY**

An extreme-sport enthusiast died tragically while attempting a new record.

Write her/his obituary.

**[25]****2.4 INTERVIEW**

A young adult recently experienced a dramatic change in fortune.

As a talk show host of a popular television/radio programme, write the interview that takes place between you and this young adult.

**[25]**

**2.5 MAGAZINE ARTICLE**

The image below, which recently won the 'Photograph of the Year' award, featured in *Life for Ever*.

Write the magazine article that accompanied the photograph.



[Source: [www.googleimages.com](http://www.googleimages.com)]

[25]

**2.6 LETTER TO THE PRESS**

There has been an increase in dishonest practices in various sporting codes.

Write a letter to the Editor of a national newspaper in which you express your views.

[25]

**TOTAL SECTION B: 50**  
**GRAND TOTAL: 100**