



basic education

Department:
Basic Education
REPUBLIC OF SOUTH AFRICA

SENIOR CERTIFICATE EXAMINATIONS

MATHEMATICAL LITERACY P2

ADDENDUM

2018

This addendum consists of 6 pages with 5 annexures.

ANNEXURE A**QUESTION 3.2****ANNUAL RATES OF TAX FOR INDIVIDUALS****2017/2018 tax year (1 March 2017 to 28 February 2018)**

TAXABLE INCOME (R)	RATES OF TAX (R)
0–189 880	18% of taxable income
189 881–296 540	34 178 + 26% of taxable income above 189 880
296 541–410 460	61 910 + 31% of taxable income above 296 540
410 461–555 600	97 225 + 36% of taxable income above 410 460
555 601–708 310	149 475 + 39% of taxable income above 555 600
708 311–1 500 000	209 032 + 41% of taxable income above 708 310
1 500 001 and above	533 625 + 45% of taxable income above 1 500 000

TAX REBATES

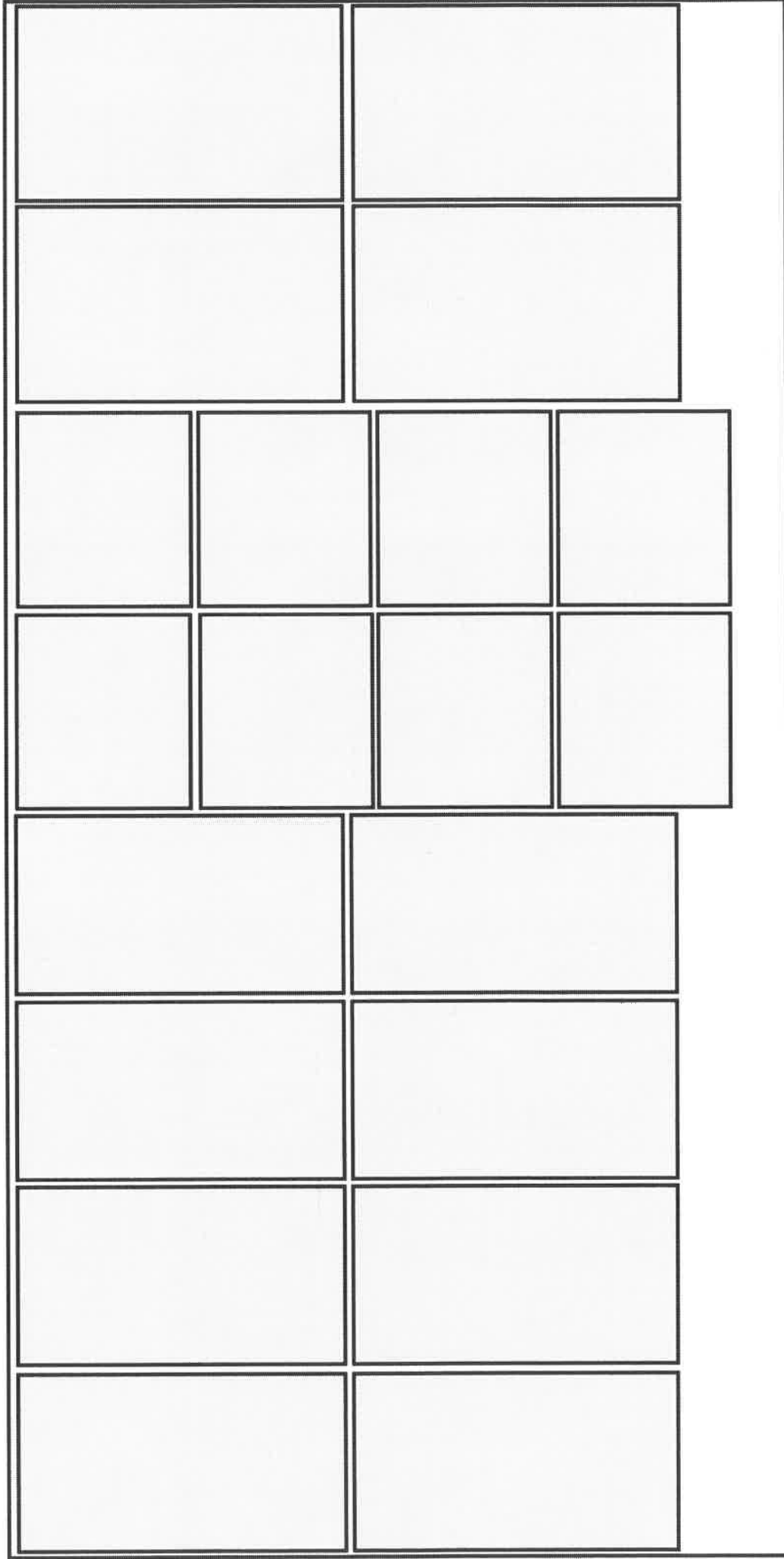
TAX REBATE	TAX YEAR
	2017/2018
Primary	R13 500
Secondary (65 and older)	R7 407
Tertiary (75 and older)	R2 466

[Source: SARS Last Updated: 30/06/2017 12:47]

ANNEXURE B

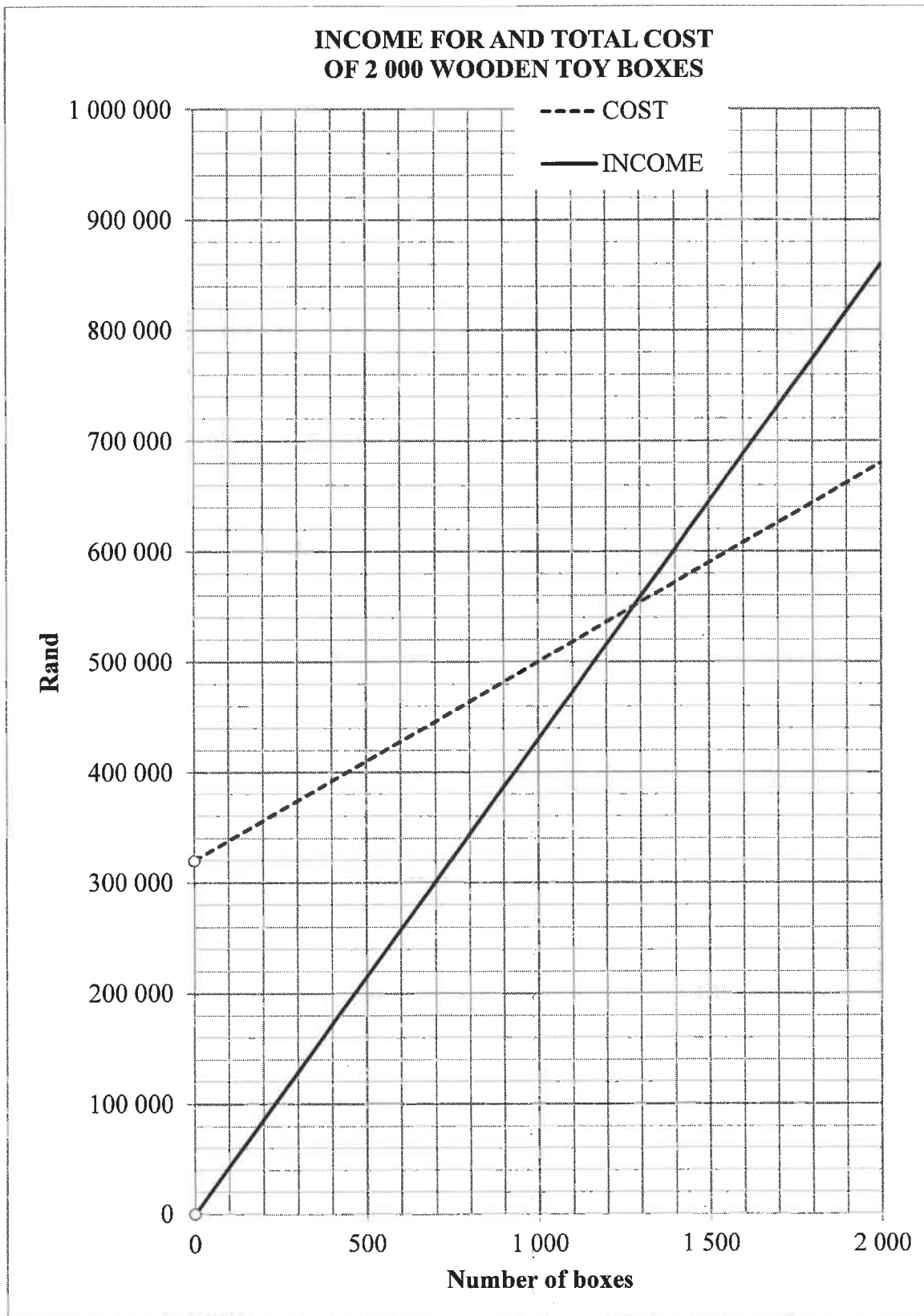
QUESTION 3.3.1

Layout of the parts of toy storage boxes on ONE sheet of plywood



ANNEXURE C

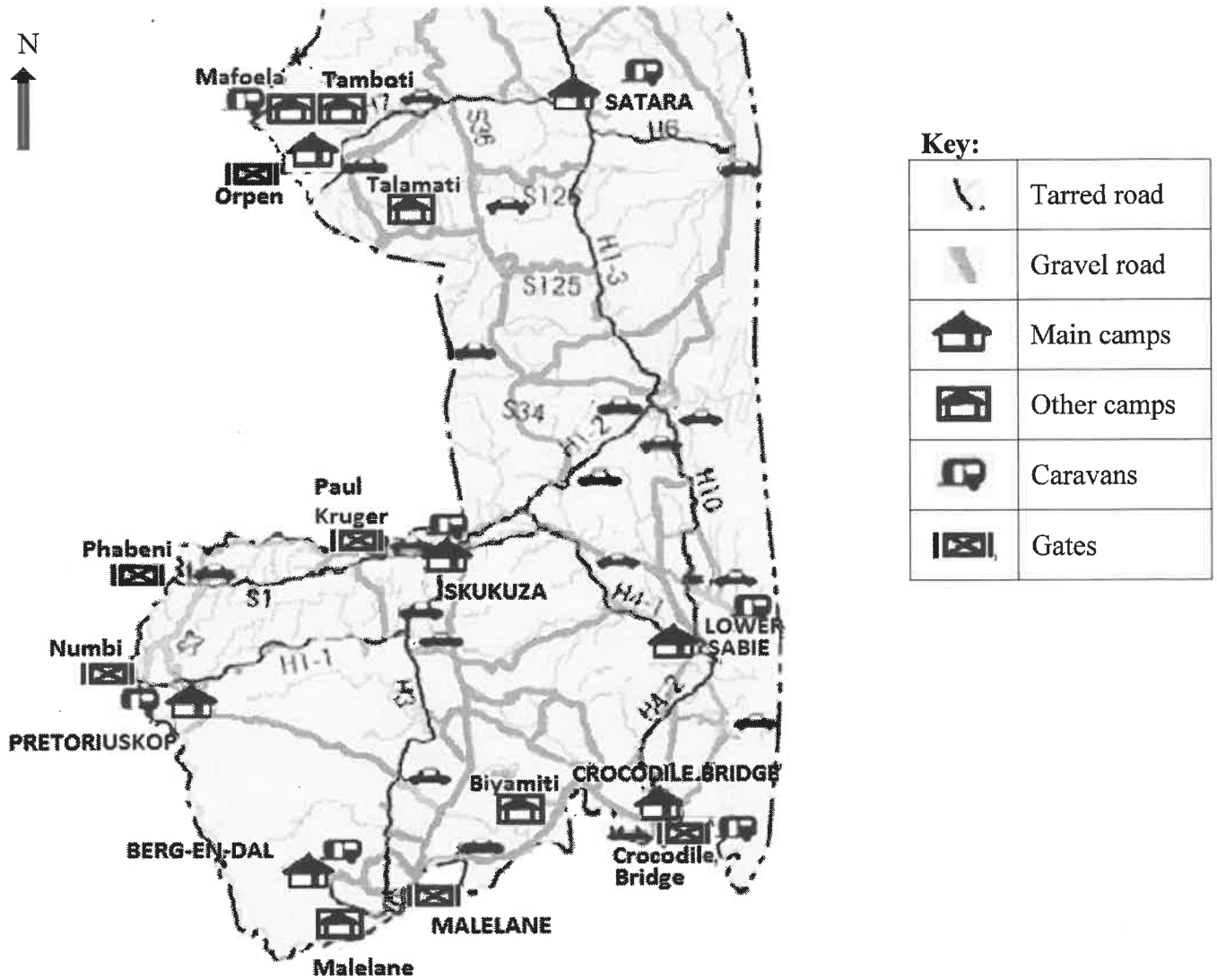
QUESTION 3.3.3



ANNEXURE D

QUESTION 4.1

PART OF THE MAP OF THE KRUGER NATIONAL PARK



[Adapted from <http://krugernationalpark.co.za>]

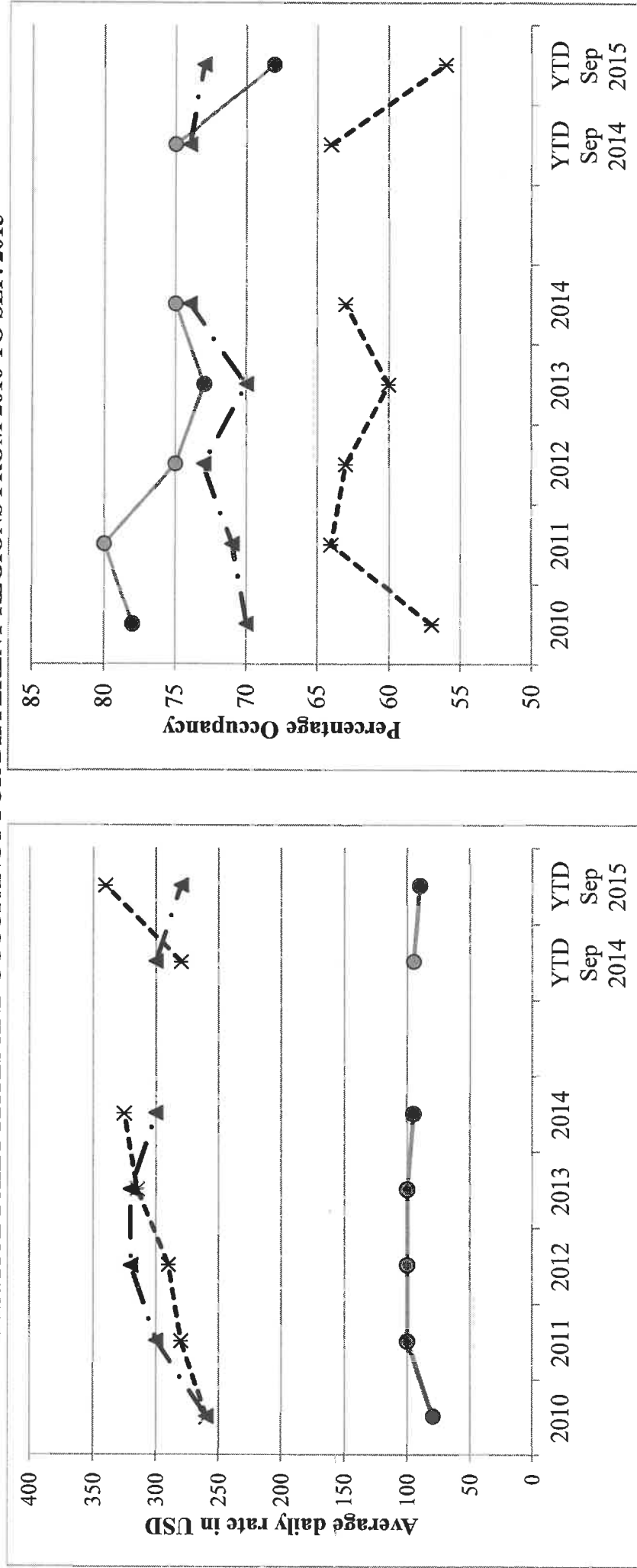
TABLE 4: Distances between camps and gates in the Kruger National Park

Gates and camp distances	Berg-en-dal	Lower Sabie	Malelane	Mopani	Numbi Gate	Orpen	Pafuri Gate	Pretorius-kop	Satara	Skukuza
Berg-en-dal	-	113	12	281	97	213	453	92	165	172
Lower Sabie	113	-	105	209	95	141	380	90	93	43
Malelane	12	105	-	272	94	204	444	85	156	64
Mopani	281	209	272	-	263	164	172	258	116	209
Numbi Gate	97	95	94	263	-	195	434	9	147	54
Orpen	213	141	204	164	195	-	335	184	48	137
Pafuri Gate	453	380	444	172	434	335	-	438	287	380
Paul Kruger Gate	83	53	74	220	65	152	392	60	104	12
Pretoriuskop	92	90	85	258	9	184	438	-	140	49

ANNEXURE E

QUESTION 4.3

AVERAGE DAILY RATES AND OCCUPANCY FOR DIFFERENT REGIONS FROM 2010 TO SEP. 2015



● Kula ▲ Jimbaran * Ubud
YTD means Year To Date

Source: [Adapted from www.balidiscovery.com]