

**RAMOTSHERE MOILOA SUB-DISTRICT  
NATURAL SCIENCE & TECHNOLOGY  
TERM 2 COMMON TEST  
JUNE 2018  
GRADE 4**

**TIME : 1,5 HOURS**

**MARKS : 55**

MARKS OBTAINED =

<b>55</b>

**INSTRUCTIONS AND INFORMATION**

1. Answer all questions.
2. Number questions exactly as they are numbered on the question paper.
3. Write neatly and legibly.

**SECTION A****QUESTION 1 ( MULTIPLE CHOICE )**

Circle the letter corresponding to the correct answer. Example: 1.11

**E**

1.1 Plants need the following to make food for themselves

- A. Oxygen , sunlight, water
- B. Water, carbon dioxide, sunlight
- C. Water, nutrients, oxygen
- D. Carbon dioxide, plants, air

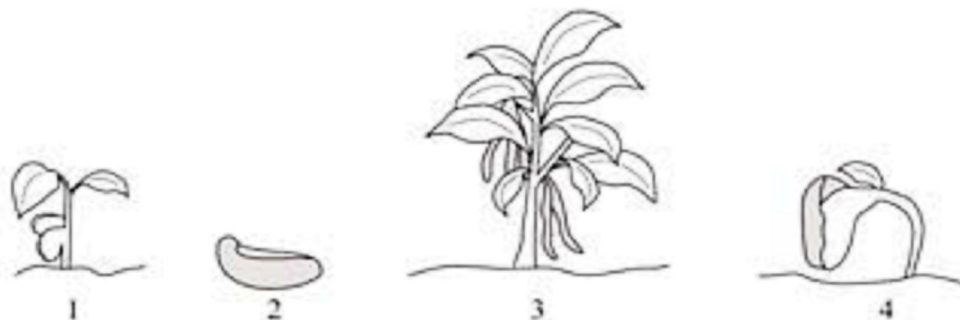
1.2 Plants suck water from the soil by using their

- A. Leaves
- B. Stem
- C. Roots
- D. Branches

1.3 Which group consists only of living things?

- A. cat , seed, bird
- B. seed, bird, wind
- C. cat, candle, rabbit
- D. wind, candle, volcano

1.4 The pictures show a bean plant at different stages of growth.



In what order do these stages take place?

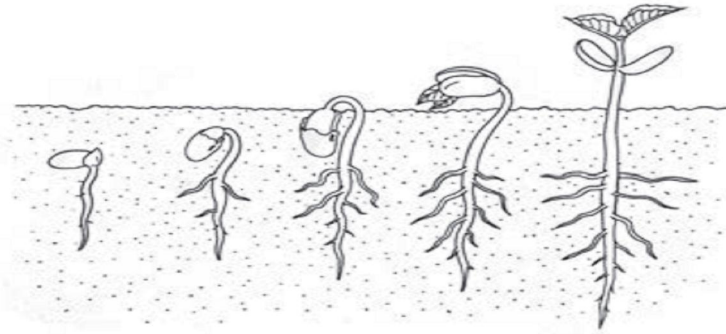
- A. 2, 1, 3, 4
- B. 2, 4, 1, 3
- C. 3, 2, 1, 4
- D. 4, 2, 3, 1

- 1.5 Which of the following form part of animal structures?
- A. Root and leg
  - B. Leave and stem
  - C. Head and tail
  - D. Ear and leave
- 1.6 Matter is everything that occupies space and has mass and volume, matter occur as \_\_\_\_\_
- A. Solids only
  - B. Liquids only
  - C. Gases; liquids and solids
  - D. Gases only.
- 1.7 An example of raw material is \_\_\_\_\_
- A. Glass
  - B. Sand
  - C. Wood
  - D. Plastic
- 1.8 When you make soap bubbles, what is inside the bubbles?
- A. Air
  - B. Soap
  - C. Water
  - D. Nothing
- 1.9 Which of the following statement is TRUE about solids?
- A. Take up a definite shape
  - B. Can flow
  - C. Takes up all the space available
  - D. Can flow when it is hot
- 1.10 Which changes are examples of melting?
- A. Otsile put jelly in the fridge to set
  - B. Farrah put butter in a pan so that you can fry an egg
  - C. Tom have a piece of chocolate in his pocket on a hot day and pocket get wet
  - D. Gert put wet clothes outside to the sun to dry up.

(10)

## QUESTION 2

2.1 You can germinate the seeds to show that they are living.



2.1.1 Explain what germination means.

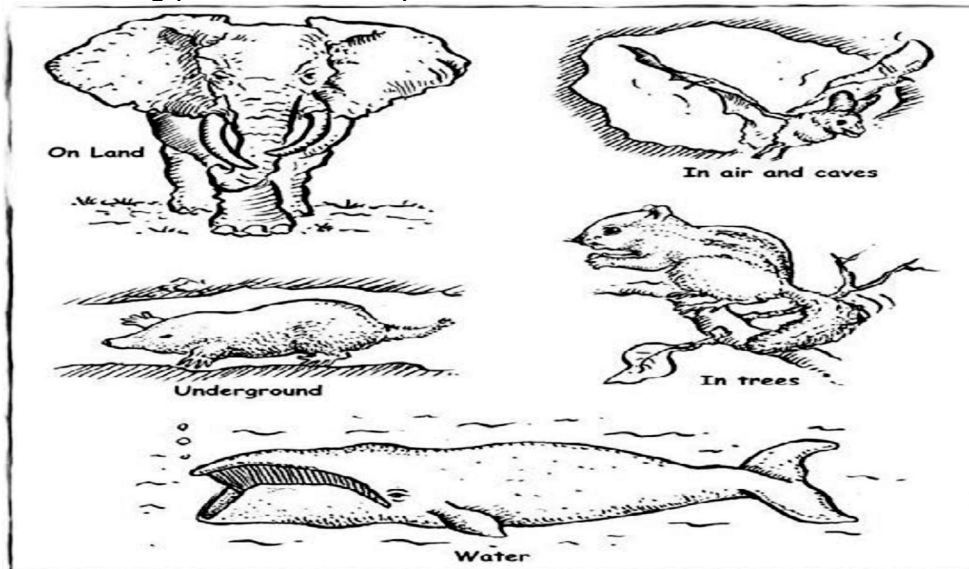
(2)

2.1.2 What does a seed need to germinate?

(2)

2.2 *Some animals live in natural habitats for their homes. Other animals build their own homes. Some animals even live in other animal's homes. A natural shelter is a home that the animal has made for itself. Animals live in different kinds of homes like: holes in the ground; caves; nests; trees.*

Look at the following picture of a few places where animals live.



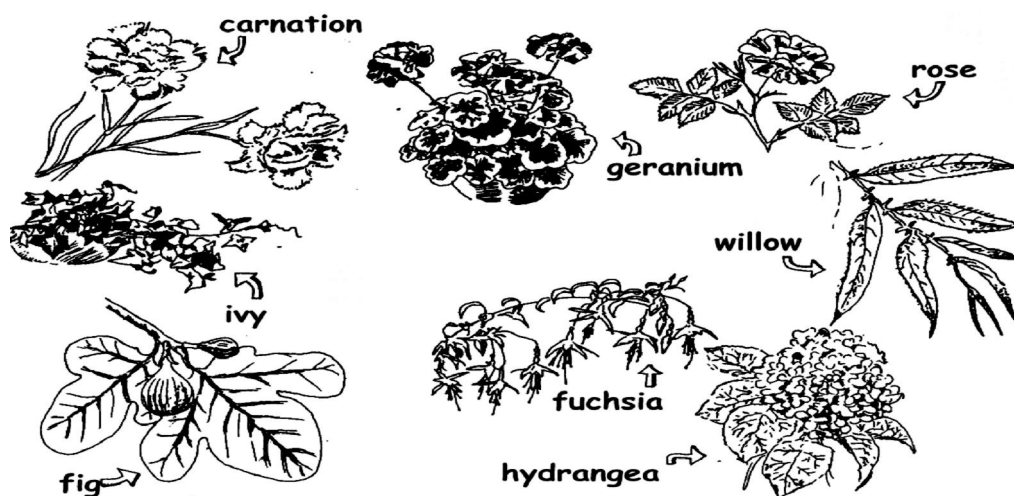
2.2.1 Explain in your own words what a habitat is?

(1)

2.2.2 Explain the difference between man-made and natural shelters. (2)

MAN-MADE SHELTERS	NATURAL SHELTERS

2.3 Look at the picture below and answer the following questions:



Which flowers would you group together? Use the following headings:

MANY FLOWERS CLOSE TOGETHER	SINGLE (ONE) FLOWERS ON A LONG STEM

(4)

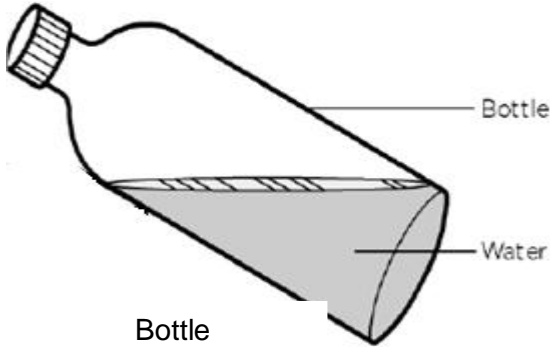
**2.4 STUDY THE PICTURES BELOW.**



Chicken eggs about to hatch



Water tank



Pine trees

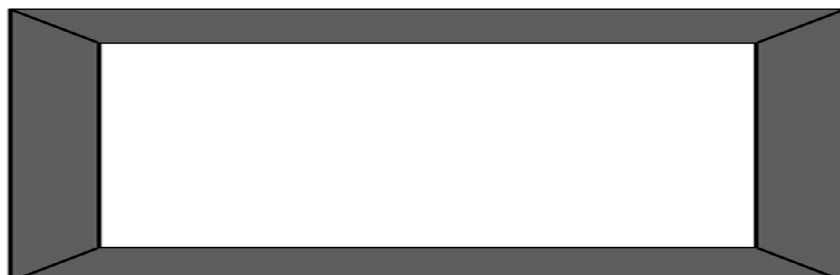
Write each object in the picture in the correct group of frame structure , shell structure, living ; non living;

FRAME STRUCTURE	SHELL STRUCTURE	LIVING	NON LIVING
(a) _____	(b) _____	(e) _____	(g) _____
	(c) _____	(f) _____	(h) _____
	(d) _____		

(8)

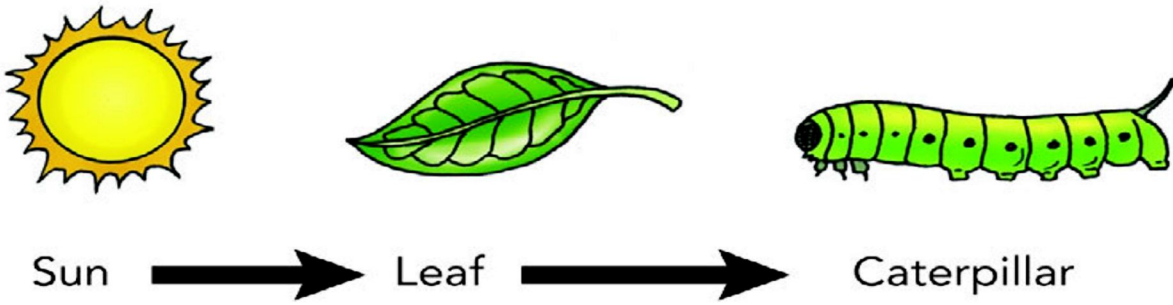
**SECTION B  
QUESTION 3**

3.1 Frame structures can be made stronger. Draw a brace or braces onto the wooden frame below to make it a much stronger structure.



(2)

3.2. Study the diagram below and answer the questions that follow.



Which of the above is a:

- 3.2.1 Herbivores \_\_\_\_\_ (1)
- 3.2.2 Producers \_\_\_\_\_ (1)
- 3.2.3 Source of energy \_\_\_\_\_ (1)

[ 5 ]

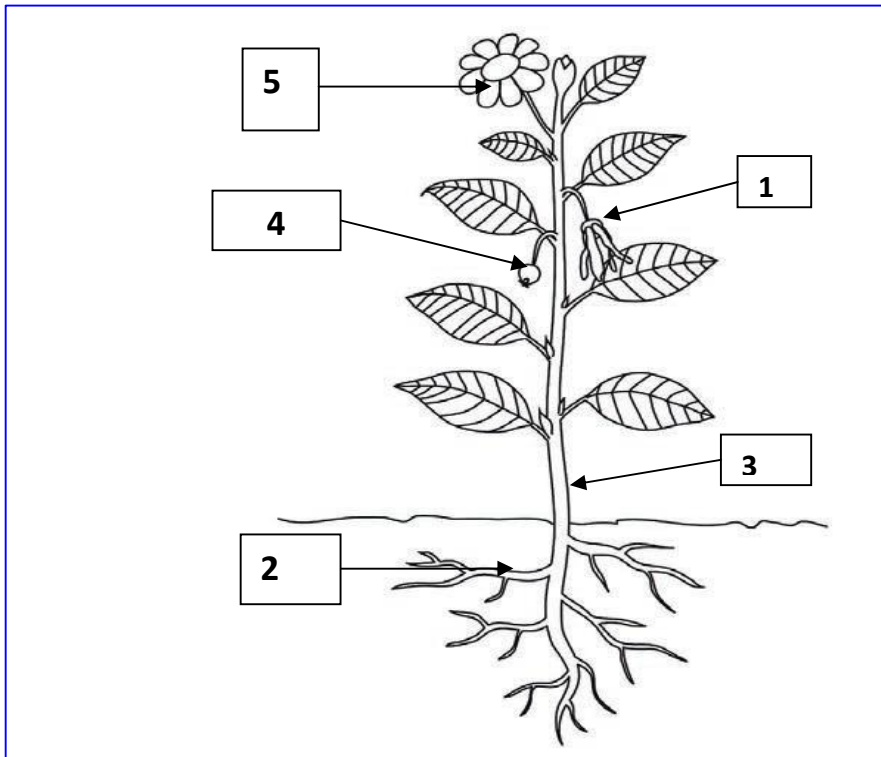
**QUESTION 4**

4.1 Match the term in column B to the statement in column A.

Column A	Write <b>answer in this column</b>	Column B
4.1.1. When liquid changes to gas we say it.....		A. melts B. condenses C. evaporates D. struts E. pollution F. oxygen G. carbon dioxide H. cools
4.1.2 The process of making the environment or something dirty or unhealthy		
4.1.3 The gas that is taken in by animals to the lungs		
4.1.4 The gas taken out by animals and is taken in by plants		
4.1.5   ō  ō  ō  ō  ō  ..are used to strengthen or support structures		

(5)

4.2 Write the name of the parts of the plant labelled 1 . 5 in the spaces below



PART 1 . 5

- 1 \_\_\_\_\_
- 2 \_\_\_\_\_
- 3 \_\_\_\_\_
- 4 \_\_\_\_\_
- 5 \_\_\_\_\_

(5)

4.3 State TWO functions of the part labelled 2 in the above diagram?

(2)

---

---

4.4. Write down TWO functions of part labelled 3 from the above diagram.

(2)

---

---

4.5 What THREE important things do plants need to grow?

---

---

---

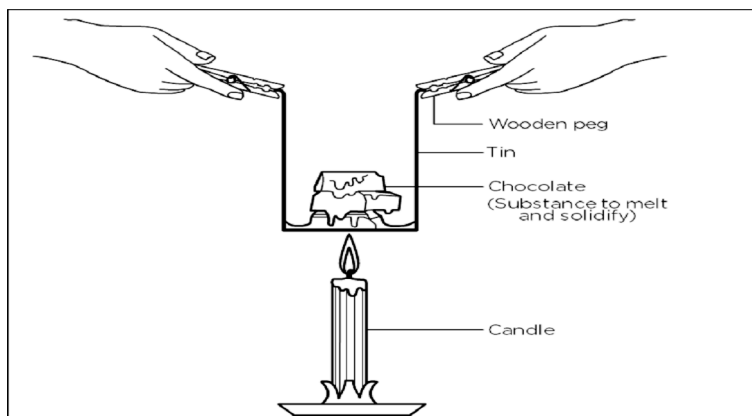
(3)

[ 17 ]



**QUESTION 5**

Study the diagram below and answer the questions that follow:



5.1 What do you need to do to change liquid chocolate into a solid chocolate again? (1)

---

5.2. What happened when the solids were heated by the candle? (1)

---

**5.3 BOILING ; CONDENSATION AND EVAPORATION.**

5.3 You cannot actually see the steam. The steam is extremely hot and quickly cools and forms tiny droplets in the air. When the steam changes into tiny water droplets, what is this called? (2)

---

**GRAND TOTAL: 55**