



SA EXAM PAPERS

YOUR LEADING PAST YEAR EXAM PAPER
PORTAL

Visit SA Exam Papers

www.saexampapers.co.za



basic education

Department:
Basic Education
REPUBLIC OF SOUTH AFRICA

NATIONAL SENIOR CERTIFICATE

IGREYIDI 12

ISINDEBELE ILIMI LEKHAYA (HL)

IPHEPHA LESITHATHU (P3)

FEBHERBARI/MATJHI 2017

IMITLOMELO: 100

ISIKHATHI: Ama-iri ama-2½

Iphepheli linamakhasi ama-5.

YELELA

1. Iphepheli LINEENGABA EZIMBILI, u-A no-B.
ISIGABA A: Amatheksthi wokuzitlamela (Ama-esityi) (50)
ISIGABA B: Amatheksthi wokuthintana (2 x 25) (50)
YELELA: Abafundi bakatelelekile bona baphendule EMIBILI imibuzo KUSIGABA B.
2. Phendula umbuzo OWODWA ESIGABENI A kanye nemibuzo EMIBILI ESIGABENI B.
3. Tlola ngelimi ohlolwa ngalo.
4. Thoma ISIGABA ESINYE NESINYE nombuzo OMUNYE NOMUNYE ekhasini ELITJHA.
5. KUSIGABA A kufuze uhlele (usebenzise umebhengqondo, idayagramu/ fflowutjhadi/amagama amummongo, njll.), ubuyekeze bewulungise neemphoso emsebenzinakho. Ukuhlela kwakho akuvele nofana kubonakale NGAPHAMBI kwe-esityakho.
6. Ukuhlela kwakho ukutlole kuhle kubonakale ekhasini lokuthoma bese uthoma i-esityakho ekhasini elilandelako.
7. Isikhathi esiphakanyisweko sokutlola ISIGABA NGASINYE:
ISIGABA A: Pheze imizuzu ema-80
ISIGABA B: Pheze imizuzu ema-70 (2 x 35)
8. Tlola iinomboro zeempendulo zakho zifane patsi nangendlela ezinonjorwe ngayo ephepheni lemibuzo.
9. Isihloko asingabalwa nakubalwa inani lamagama.
10. Tlola ngesandla esihle nesibonakalako.

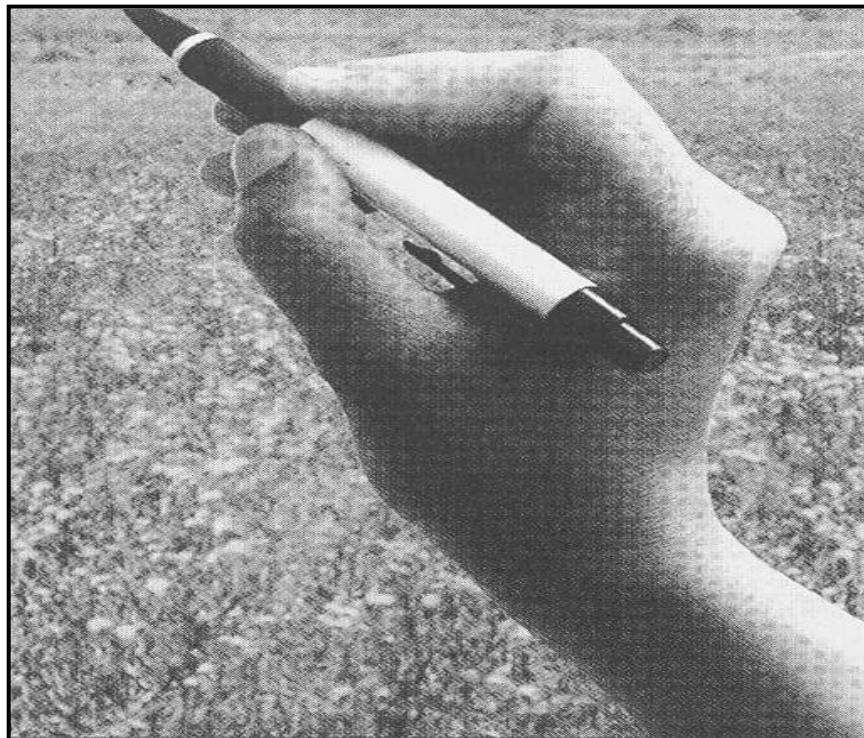
ISIGABA A: AMATHEKSTHI WOKUZITLAMELA (AMA-ESEYI)**UMBUZO 1**

Khetha isihloko ESISODWA utole ngaso i-eseyi engaba magama ama-340–390.

Kufanele utjengise ukuhlela kwakho (kungaba ngokukodwa kilokhu: umebhengqondo/idayagramu/amaflowutjhadi/amagama amummongo, njll).

- 1.1 Isehlakalo esatjhugulula ipilwami. [50]
- 1.2 Ukutjhisa ngokweqileko kwephasi mazombe kukhinyabeza umnotho wenarha. [50]
- 1.3 Isiqunto engasithathako ngemva kokuphumelela kwami ngoncancabe. [50]
- 1.4 Amalayibhrari athuthukisa amakghono wokufunda elutjheni. [50]
- 1.5 Abentwana bafunda ngokubona okwenziwa babantu abakhulu. Vumelana nofana uphikisane nesitatimendesi. [50]
- 1.6 Ubuhle nobumbi bokuba nabangani abanengi. [50]
- 1.7 Qalisisa iinthombe ezingenzasi ukhethe ESISODWA bese uzitlamela i-eseyi uyinikele isihloko esiyifaneleko. Tjheja: Isithombe ne-eseyakho azikhambisane kuhle.

1.7.1



[Sithethwe ku-www.images.com]

[50]

1.7.2



[Sithethwe ku-www.images.com]

[50]

IMITLOMELO YESIGABA A:

50

ISIGABA B: AMATHEKSTHI WOKUTHINTANA**UMBUZO 2**

Khetha iinhloko EZIMBILI bese utlola ngazo ngamagama ali-100 kufika kwali-120.

2.1 INCWADI YOBUNGANI

Umnganakho wenza umnyakakhe wokuthoma eYunivesithi, njeke ukukhuthazile bona nawe usebenze ngokuzikhandla ukuze uphumelele eemfundweni zakho. Mtlolele incwadi umthokoze ngokuba mngani wamambala epilwenakho. [25]

2.2 INCWADI YABAKHULU/YOMTHETHO

Ubone isikhangiso somsebenzi ephephandabeni leZidobhele la kufuneka khona umuntu ozokupaka iimpahla kesinye seentolo zakwaPhuthumani. Tlolela umphathi-sitolo incwadi ubawe isikhala somsebenzi lowo. [25]

2.3 UMLANDO KAMUFI

Esikolweni nibhujelwe lilunga lomkhandlu wabafundi ebe lilisekela lakanobhala. Njengomunye obegade atjhidelene naye khulu emkhandlwini lo, bakubawe bona utlole umlando wakhe. Tlole umlando kamufi ozokufundwa esilahlweni sakhe. [25]

2.4 I-ATHIKILI KAMAGAZINI

Tlole i-athikili kamagazini uyelelise abantu ngobungozi bokutjhayela urhamulile endloleni. [25]

2.5 IKULUMO EHLELEKILEKO

Tlole ikulumo ehlelekileko ozoyethula emnyanyeni wokugidinga ilanga lamabeletho lomntwana kamzawakho njengombana kunguwe otjhidelene khulu naye. [25]

2.6 I-INTHAVYU

Uthumbe ikoloyi ephaliswaneni ebegade nilingenele nibafundi begreyidi le-12. Ufumene ithuba lokobana u-inthavyuwiwe. Tlole i-inthavyu ebe khona phakathi kwakho nomphathi wephaliswaneni. [25]

IMITLOMELO YESIGABA B: 50
INANI LOKE: 100