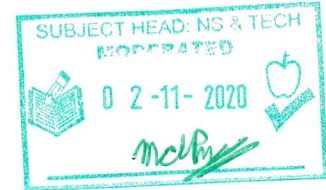


Laerskool Van Dyk Primary



Ekhurhuleni South

EMIS: 700160994



Subject: NS & Tech

Grade: 5

Term: 4 (2020)

Moderator: M. du Preez

Time Allocation: 1.5 Hour

Mark Allocation: 50

Examiner: R. Podges

Specific Aims: 1, 2, 3

Learner: _____

Date: _____ No: _____ Grade: _____

TOTAL: _____ / 50 = _____ %

Level: 1, 2, 3, 4, 5, 6, 7

Question analysis

<i>1</i>	<i>2</i>	<i>3</i>	<i>4</i>	<i>5</i>	<i>6</i>	<i>7</i>

Instructions:

- 1. Please write neatly*
- 2. Write with a blue or black pen*
- 3. Answer all the questions*

Question 1: Multiple choice

(10)

Select one correct answer and make a circle around the correct letter.

1.1 Which one of the following is NOT a property of a metal?

- a) They are strong
- b) They are shiny
- c) They break easy
- d) They are ductile

1.2 Which metal is NOT magnetic?

- a) Brass
- b) Nickel
- c) Steel
- d) Iron

1.3 A radio changes electrical energy into _____ energy

- a) Light
- b) Heat
- c) Movement
- d) Sound

1.4 South –Africa’s main power station uses _____

- a) Water
- b) Wind
- c) Sun
- d) Coal

1.5 The input energy for an electrical lightbulb is _____

- a) Light
- b) Heat
- c) Electricity
- d) Stored

1.6 When there is a fire in the house you must _____

- a) Play with matches
- b) Use fuel to put out the fire
- c) Get out of the house
- d) Open a window

1.7 One of the disadvantages of iron is that it _____

- a) Rusts
- b) It’s shiny
- c) It’s a soft metal
- d) It’s a polymer

1.8 A fish’s habitat is _____

- a) Savana
- b) water
- c) Desert
- d) In the mountains

1.9 A generator _____

- a) Creates heat energy
- b) Creates light energy
- c) Creates electrical energy
- d) Creates sound energy

1.10 Which one of the following is NOT part of a torch's electrical circuit?

- a) Plastic wires
- b) Light bulb
- c) Switch
- d) Batteries

Question 2: True or false

(5)

State whether the following statements are True or False.

2.1 Metals can be used too make aeroplanes. _____

2.2 When metals tarnish they go reddish brown. _____

2.3 Wind Turbines is a renewable power source. _____

2.4 Always use electrical appliances with wet hands. _____

2.5 The national grid explains how electricity is made _____

Question 3: Column A and B

(5)

Match column A with column B, write your answer in column C

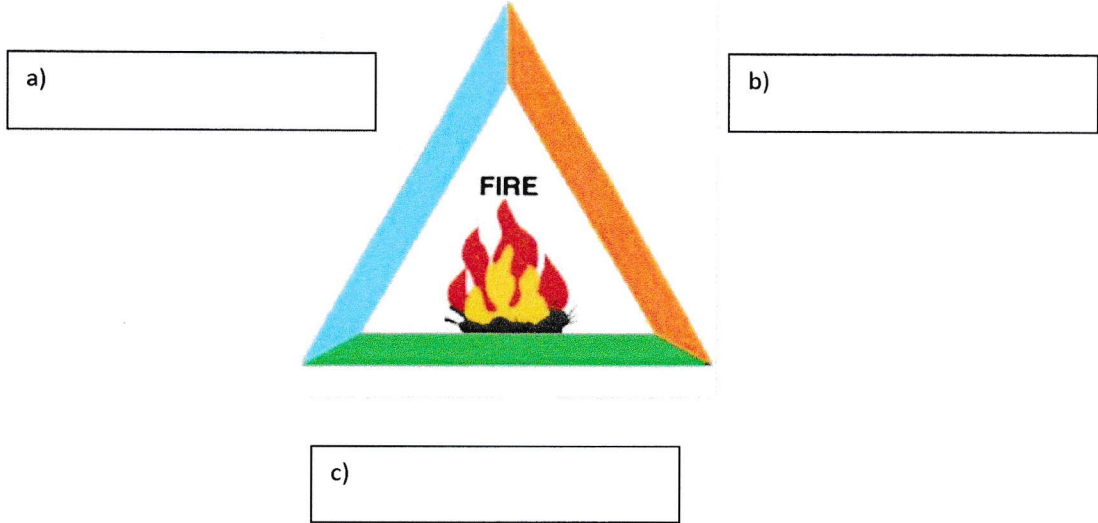
Column A	Column B	Column C
3.1 Wood	a. Source of stored energy	3.1
3.2 Non-metal	b. Fuel	3.2
3.3 A person running	c. Steel	3.3
3.4 Metal	d. Properties	3.4
3.5 Battery	e. Movement energy	3.5
	f. Glass	
	g. Brittle	
	h. Corrode	

Question 4: Safety with fire

(7)

Answer the following questions

4.1 Label the FIRE TRIANGLE



4.2 List two ways how you can prevent a fire

- _____

- _____

4.3 Predict what would happen if you open a window while the house is burning (give a reason for your answer)

Question 5: Electricity

(5)

Explain what happens in a coal power station by completing the steps

1. Coal burns in a burner
2. _____

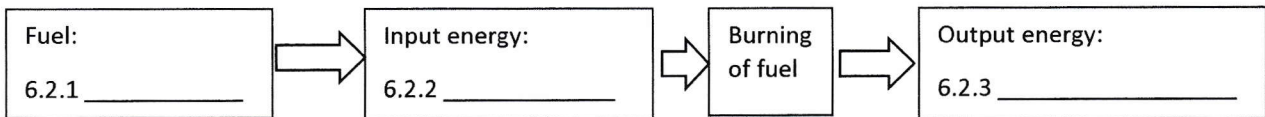
3. _____
4. _____
5. _____
6. _____

Question 6: Input- and output energy

6.1 Compare different types of energy and fuels by completing the table below (6)

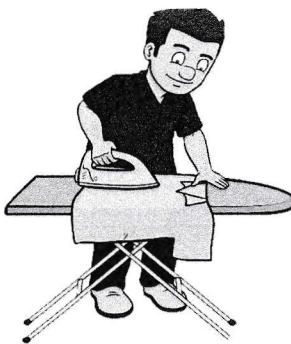
Fuel	Input energy	Output energy
Wood	Heat	Light and heat
Light bulb	6.1.1	6.1.2
Heater	Electrical	6.1.3
Food	6.1.4	Movement
6.1.5	Heat	Heat and light
Speaker	Electrical	6.1.6

6.2 Explain how energy changes when you use a gas stove (3)



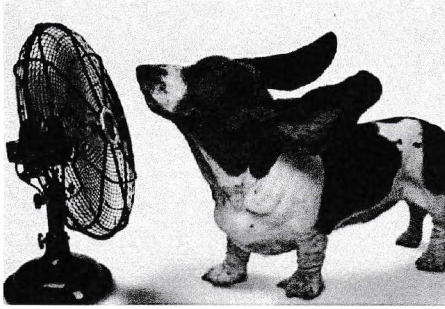
6.3 Identify the input- and output energy in the following pictures: (4)

6.3.1 A person ironing clothes



Input energy: _____
Output energy: _____

6.3.2 An electrical fan



Input energy: _____
Output energy: _____

Question 7 : Coal power stations

(5)

Power stations use different ways to generate electricity. A power station needs a source of energy. In South Africa, most of our power stations burn coal to use the energy stored in coal to generate electricity. Answer the following questions about coal power stations.

7.1 Predict what would happen in South-Africa if there were no more coal left to make electricity

7.2 Suggest two other ways South-Africa can generate electricity without burning coal

7.3 Why would you say that Coal power stations is not the best method to generate electricity?

Total: 50

Enjoy your holiday!!!

