



Education and Sport Development

Department of Education and Sport Development
Departement van Onderwys en Sportontwikkeling
Lefapha la Thuto le Tlhabololo ya Metshameko

NORTH WEST PROVINCE

PROVINCIAL ASSESSMENT

GRADE 10

GEOGRAPHY P1

JUNE 2019

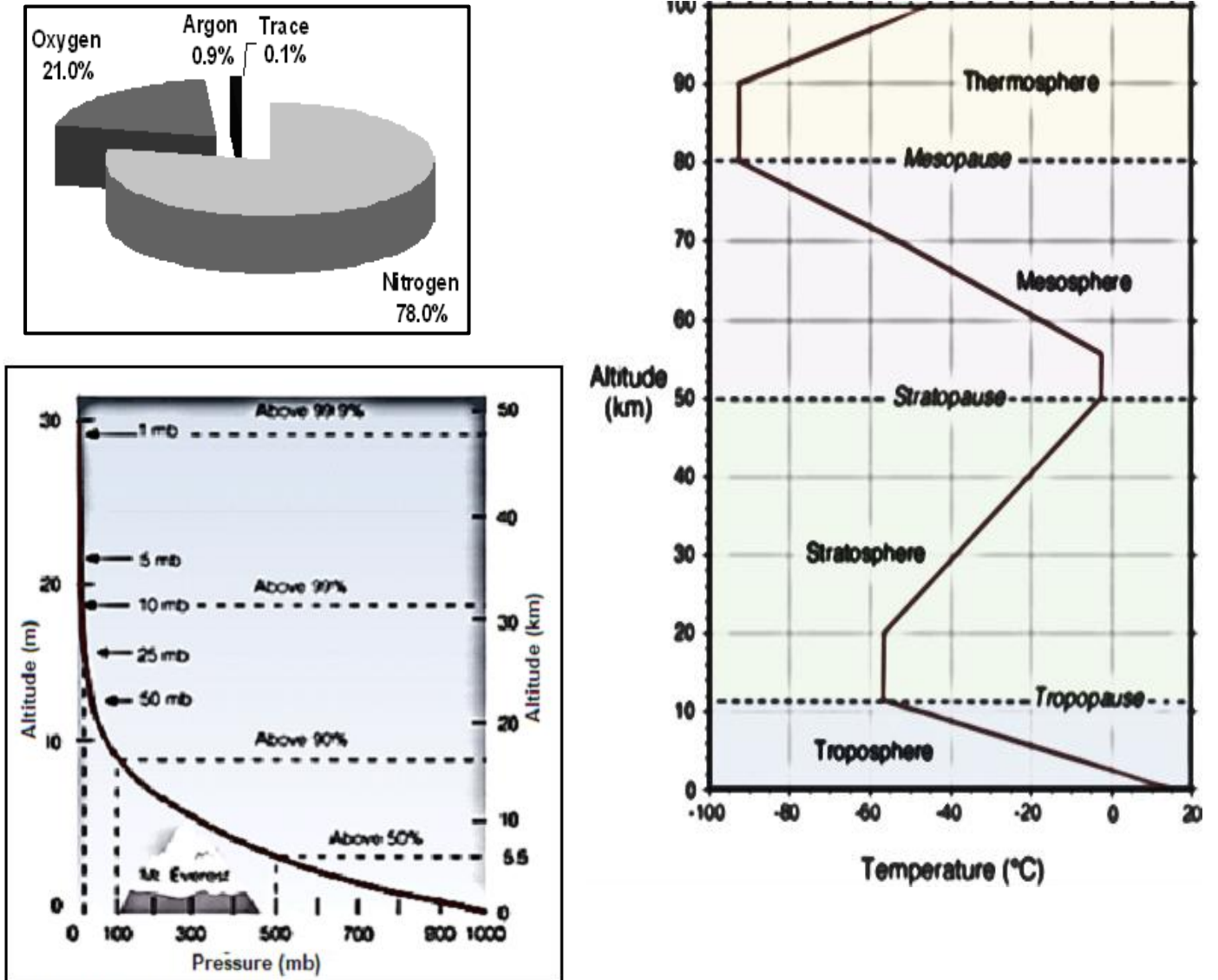
ANNEXURE

This Annexure consist of 08 pages.



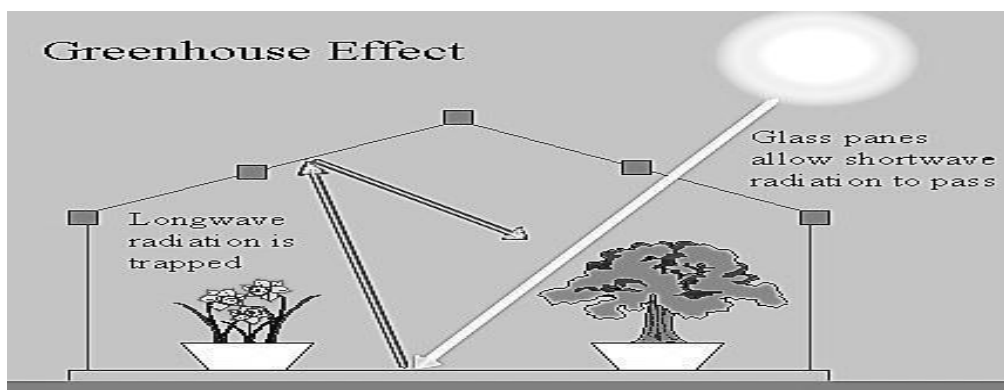
NW/JUNE/GEO/EMIS/6*****

Figure 1.2: Structure and the composition of the atmosphere.



Source: Adapted from Google Image.

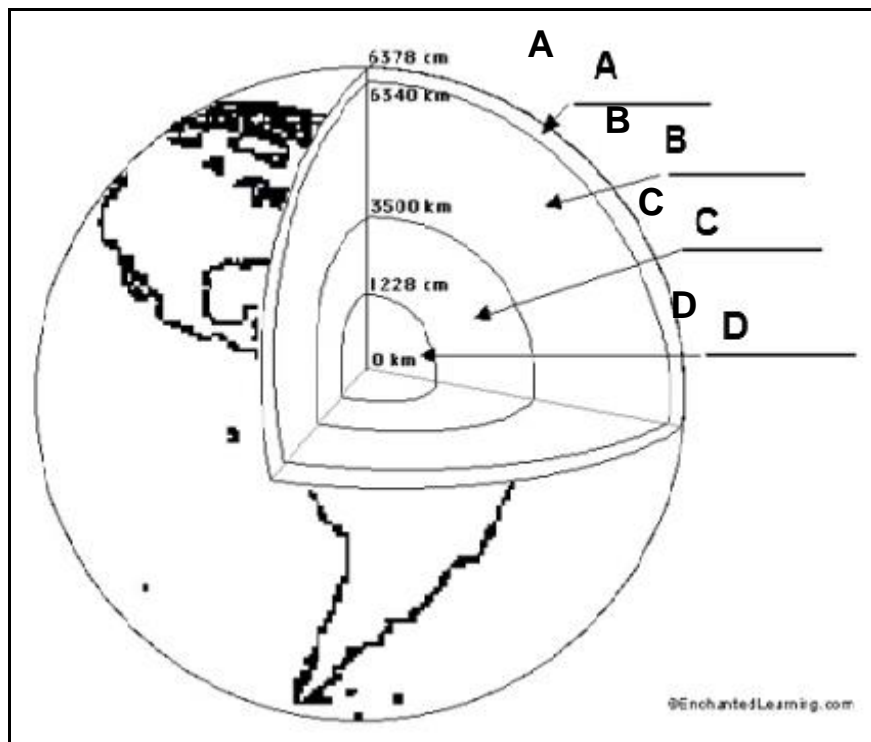
Figure 1.3: The Greenhouse



Source: Google images

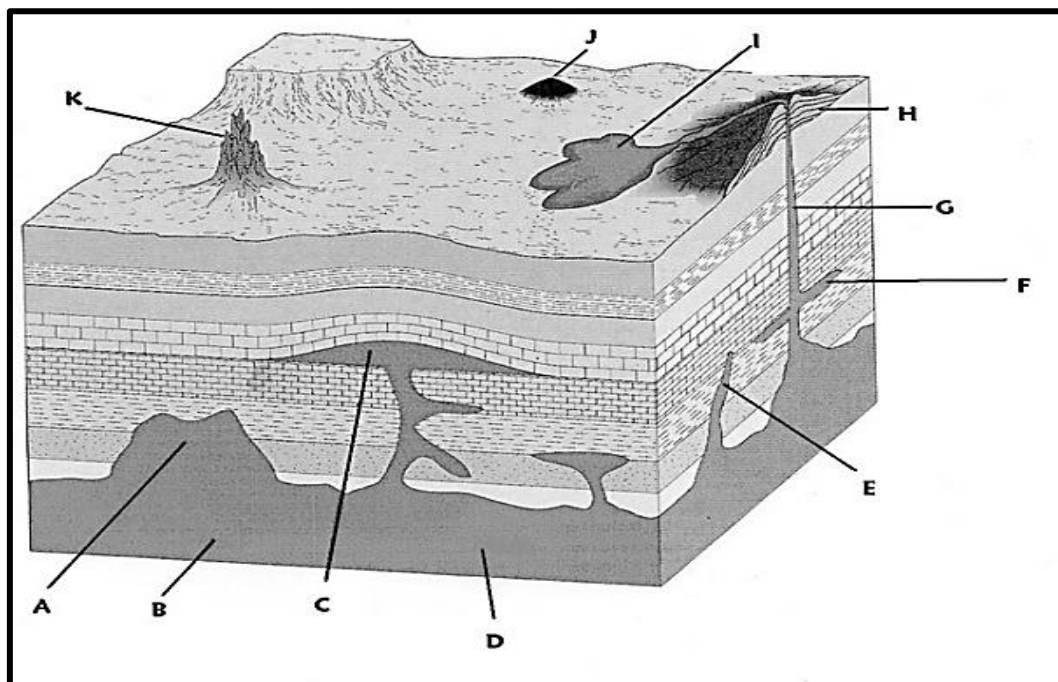


Figure 1.4 A Structure of the earth



<http://www.enchantedlearning.com/subjects/astronomy/activities/label/labelearth.shtml>

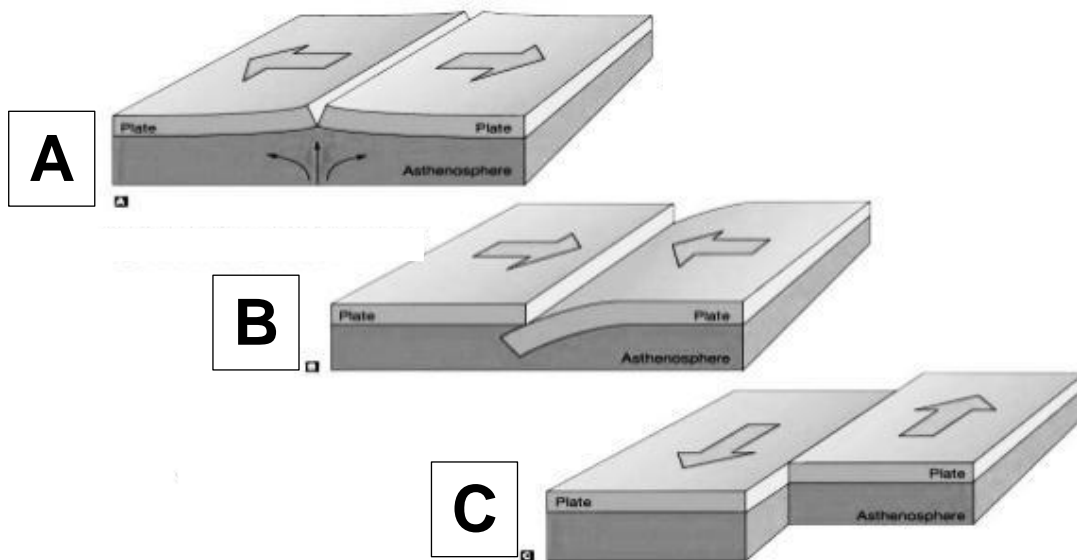
Figure 1.4 B: Volcanic intrusions



<http://www.chm.bris.ac.uk/webprojects2002/spence/page3a.htm>

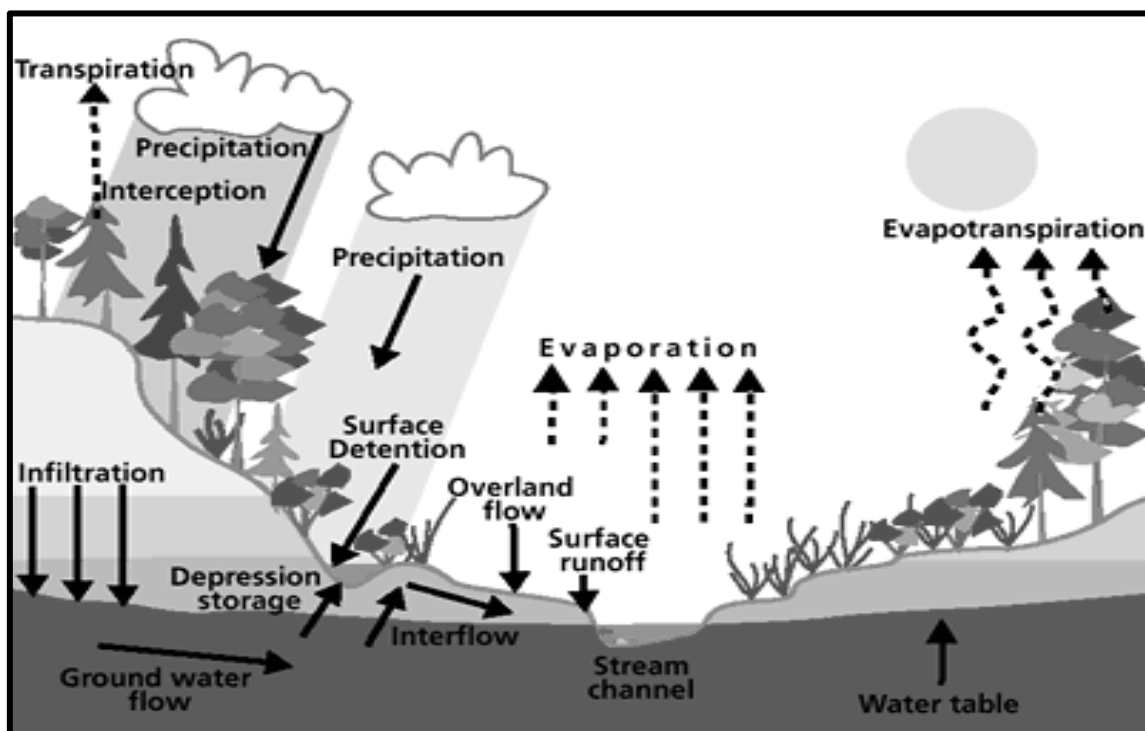


Figure 1.5: Plate boundaries



Source: www.emaze.com

Figure 2.2: Water cycle



Source: www.google.com

Figure 2.3: The extract of Marion Island from a synoptic weather map South African weather map

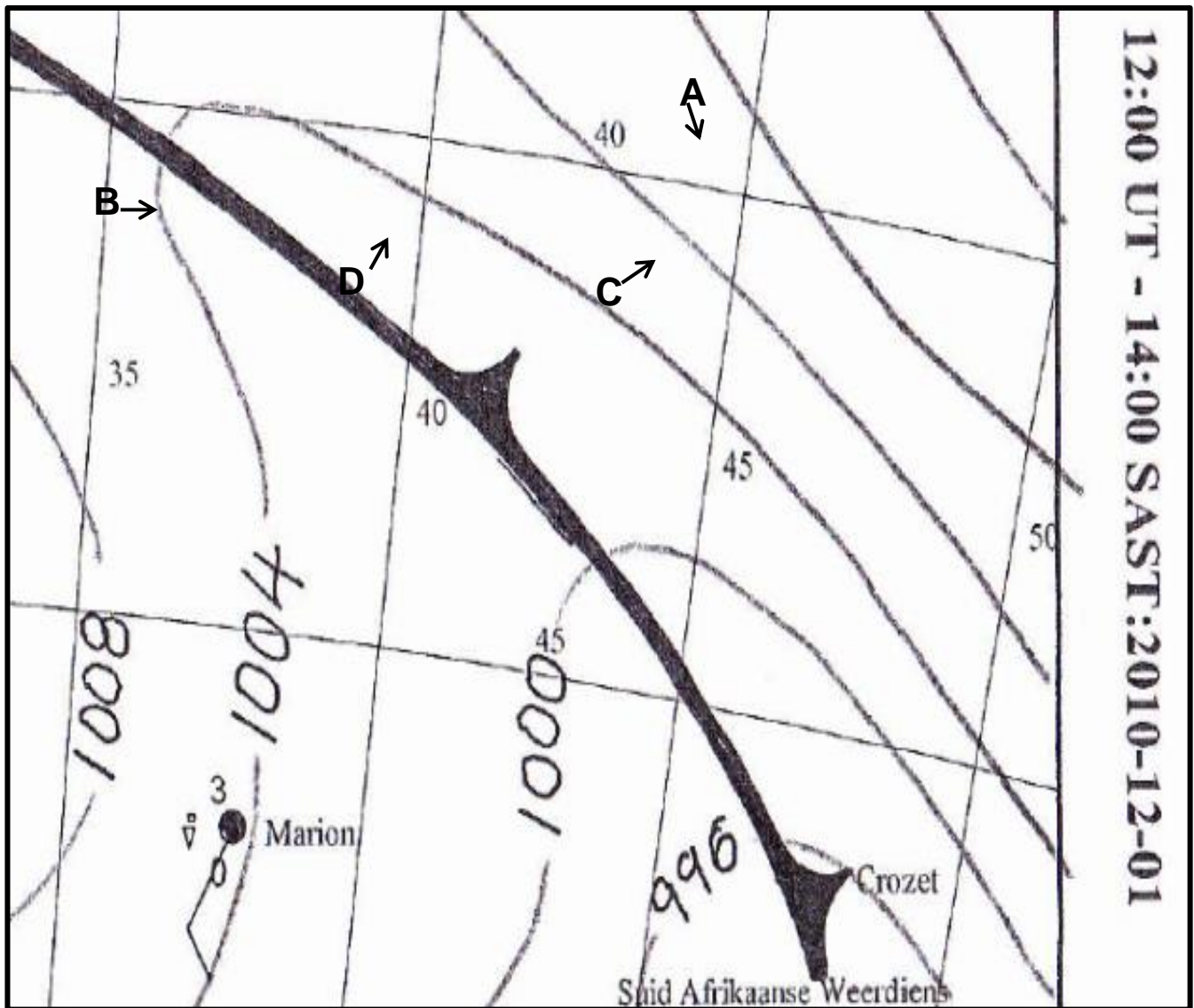
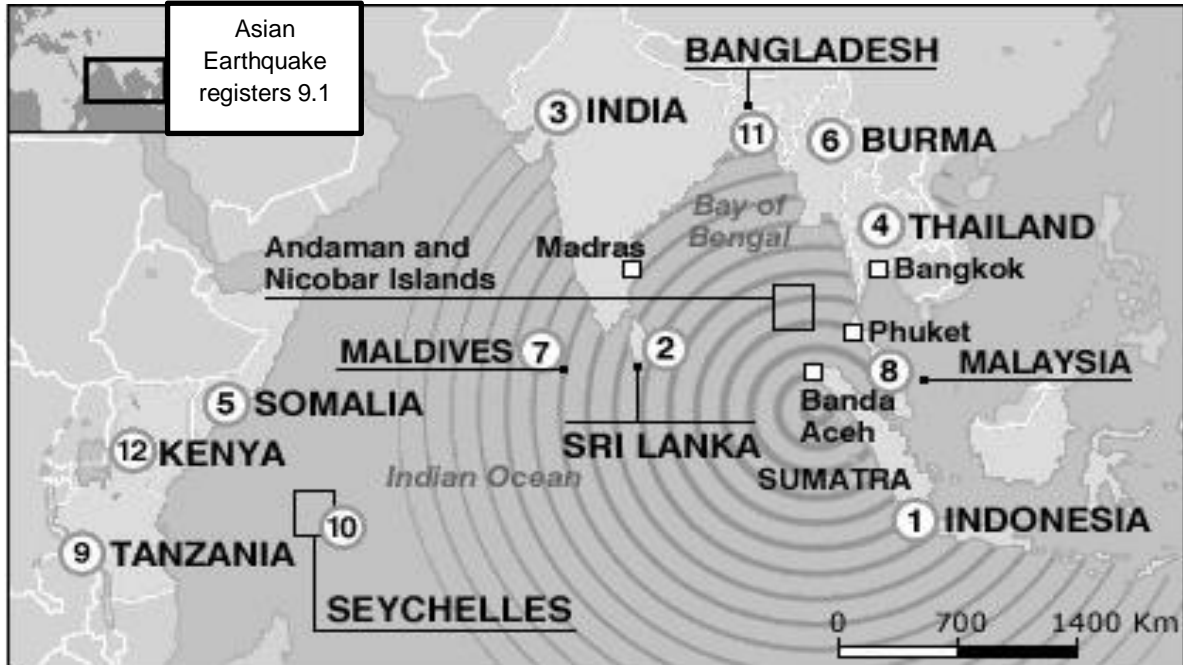


Figure 2.4 Earthquakes in Asia



EARTHQUAKE IN ASIA 26 December 2004

The earthquake and tsunami that ravaged thousands of coastline villages from Thailand to Somalia this past weekend has prompted an urgent need for relief from the international community. With the death toll at 130,000 and rising quickly, the threat of infectious diseases is increasing rapidly as entire islands go without clean water and medicine. Rescue teams from all over the world are on their way to assist the survivors.

We NEED YOUR CONTRIBUTION TO HELP THE SURVIVORS OF THIS TRAGEDY.

<http://www.ofm.org/news/1231nwsTERe>



Figure 2.5 A Newspaper extract.**The Earth erupts! THREE volcanoes ablaze in Mexico, Chile and Indonesia while a fourth rumbles away 13 July 2015.**

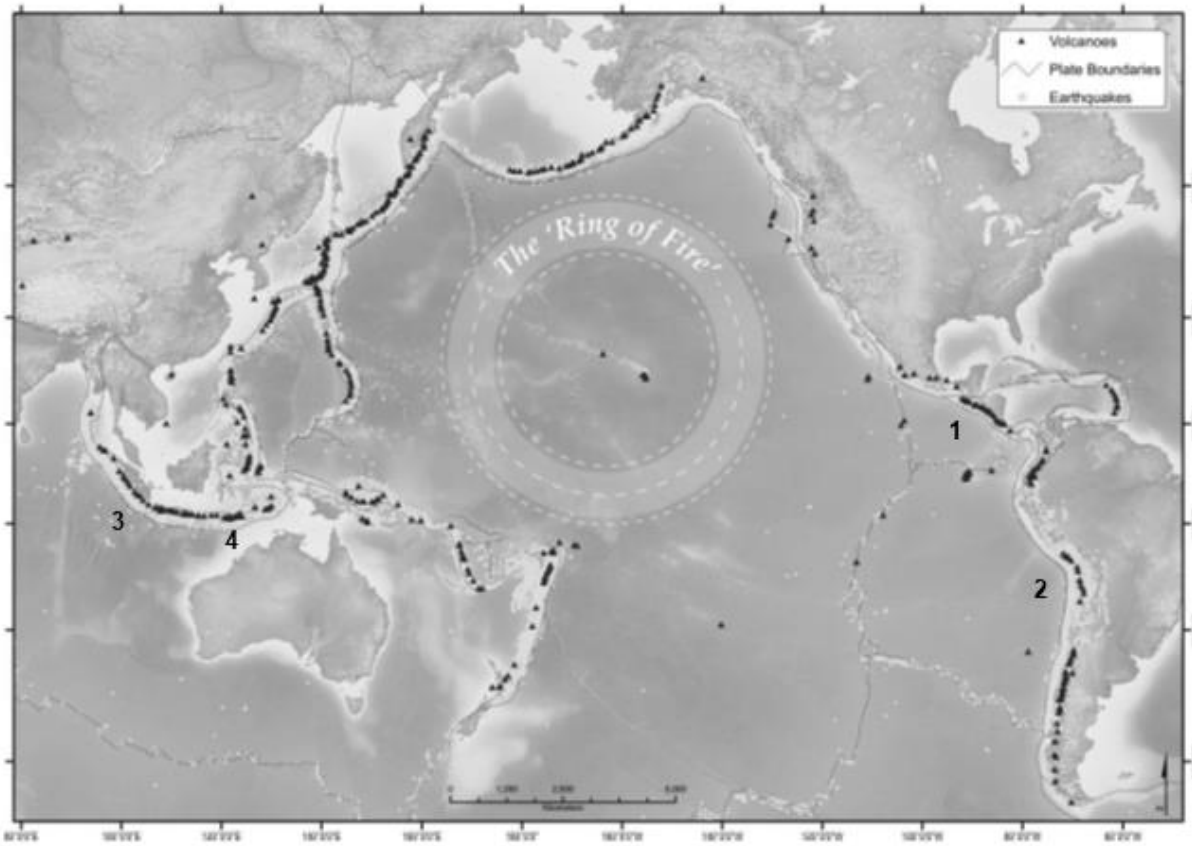
Hundreds of people have been forced to flee from their villages located at the foot of the Colima Volcano in western Mexico's Colima State, following an eruption this weekend which saw the active mountain spew ash and fire. The volcano, also known as the Volcano of Fire, also forced a local airport to close as authorities have sealed off a 7.5-mile area amid fears an even bigger eruption may follow. In Chile, the Villarrica Volcano, around 460 miles south of the capital Santiago, has been erupting overnight. The Villarrica, located near the popular tourist resort of Pucon is among the most active in South America.

In Bali, Indonesia a volcano eruption on the neighbouring island of Java has forced one of Indonesia's busiest airports to close for the second time in just a few days. Mount Raung on Indonesia's main island of Java has been erupting for weeks, and on Thursday a cloud of drifting ash forced the closure of Bali airport during peak holiday season, and four others. It has since been reopened. Air traffic is regularly disrupted by volcanic eruptions in Indonesia, which sits on a belt of seismic activity running around the basin of the Pacific Ocean and is home to the highest number of active volcanoes in the world, around 130. Also, in Indonesia, Mount Sinabung in Sumatra, has been erupting for two months, forcing the evacuation of more than 10,000 people.

[Source: Daily Mail]



Figure 2.5 B Map: Volcanism



Key:

- 1: Colima Volcano, Mexico
- 2: Villarrica Volcano, Chile
- 3: Mount Raung, Java, Indonesia
- 4: Mount Sinabung, Sumatra, Indonesia

